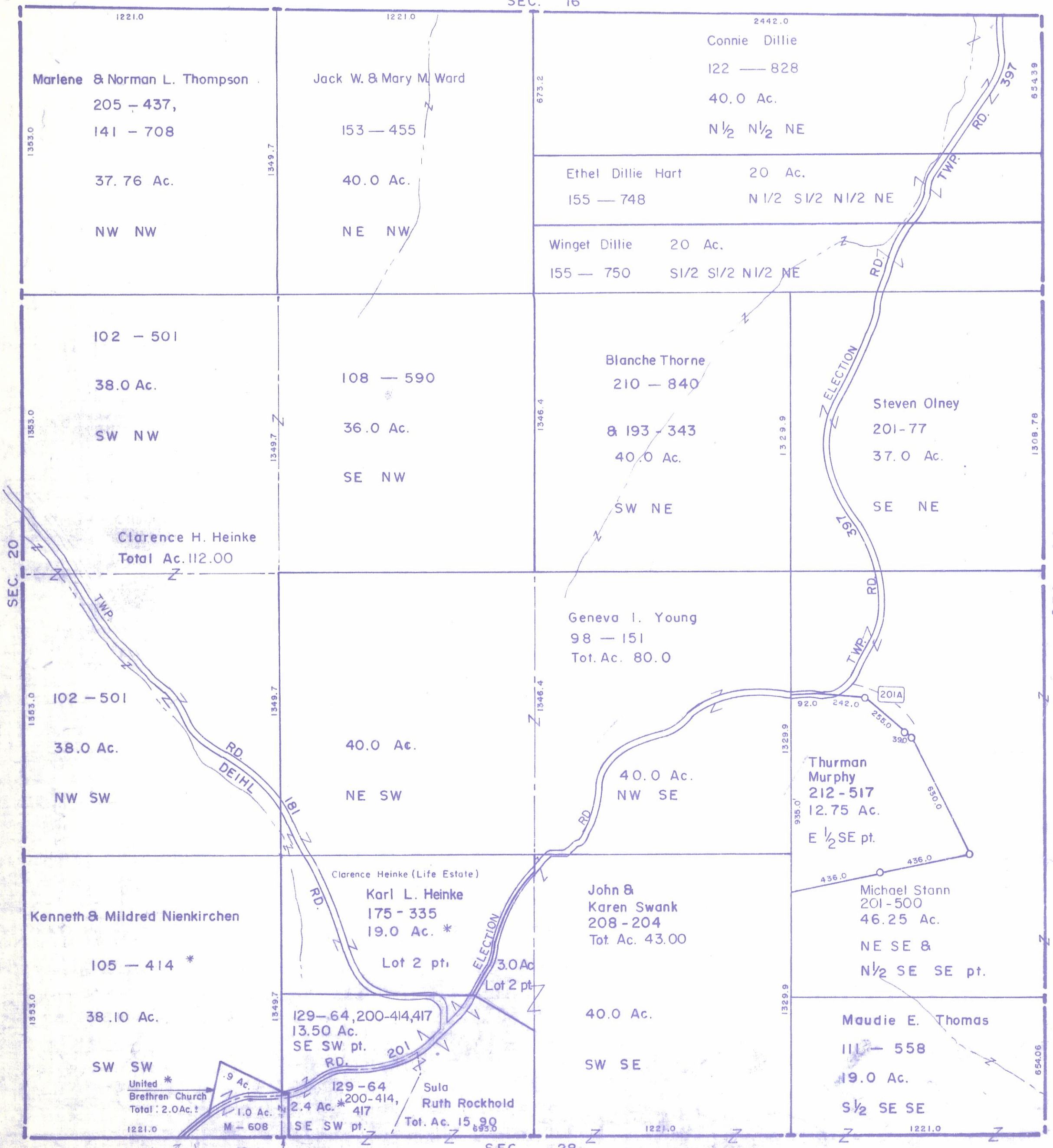


HOCKING COUNTY

Sec. 21 T11 R19

SALT CREEK TWP.

Scale 1"=400'
SEC. 16



Marlene & Norman L. Thompson
205 - 437,
141 - 708
37.76 Ac.
NW NW

Jack W. & Mary M. Ward
153 - 455
40.0 Ac.
NE NW

Connie Dillie
122 - 828
40.0 Ac.
N 1/2 N 1/2 NE

Ethel Dillie Hart 20 Ac.
155 - 748 N 1/2 S 1/2 N 1/2 NE

Winget Dillie 20 Ac.
155 - 750 S 1/2 S 1/2 N 1/2 NE

102 - 501
38.0 Ac.
SW NW

108 - 590
36.0 Ac.
SE NW

Blanche Thorne
210 - 840
& 193 - 343
40.0 Ac.
SW NE

Steven Olney
201-77
37.0 Ac.
SE NE

Clarence H. Heinke
Total Ac. 112.00

Geneva I. Young
98 - 151
Tot. Ac. 80.0

102 - 501
38.0 Ac.
NW SW

40.0 Ac.
NE SW

40.0 Ac.
NW SE

Thurman
Murphy
212 - 517
12.75 Ac.
E 1/2 SE pt.

Kenneth & Mildred Nienkirchen
105 - 414 *
38.10 Ac.
SW SW

Clarence Heinke (Life Estate)
Karl L. Heinke
175 - 335
19.0 Ac. *
Lot 2 pt. 3.0 Ac.
Lot 2 pt.

John &
Karen Swank
208 - 204
Tot. Ac. 43.00

Michael Stann
201-500
46.25 Ac.
NE SE &
N 1/2 SE SE pt.

United *
Brethren Church
Total: 2.0 Ac. *
1.0 Ac.
M - 608
1221.0
10 Ac.

129-64, 200-414, 417
13.50 Ac.
SE SW pt.
RD. 201

Sula
Ruth Rockhold
Tot. Ac. 15.90
895.0

40.0 Ac.
SW SE

Maudie E. Thomas
111 - 558
19.0 Ac.
S 1/2 SE SE

SEC. 21