

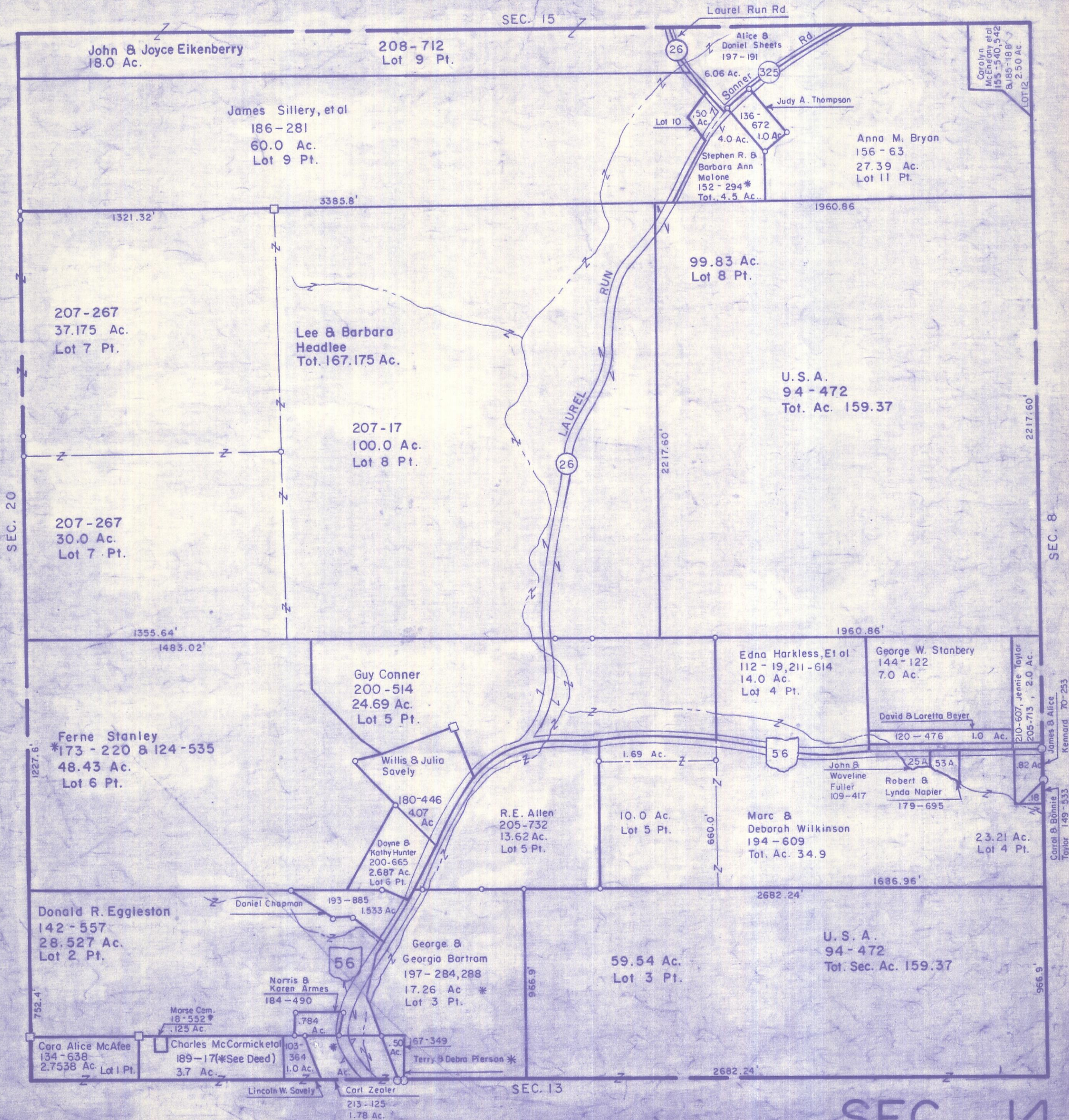
HOCKING COUNTY

STARR TWP

SEC. 14 T-12 R-16

SCALE 1"=400'

SEC. 15



John & Joyce Eikenberry
18.0 Ac.

208-712
Lot 9 Pt.

James Sillery, et al
186-281
60.0 Ac.
Lot 9 Pt.

Laurel Run Rd.

26

Alice & Daniel Sheets
197-191
6.06 Ac.

325

Santer

Lot 10

136-672
4.0 Ac.

1.0 Ac.

Stephen R. & Barbara Ann Malone
152-294*
Tot. 4.5 Ac.

Judy A. Thompson

Carolyn McEnany et al
155-540, 542
8, 185-188
LOT 12 2.50 Ac.

Anna M. Bryan
156-63
27.39 Ac.
Lot 11 Pt.

1321.32'

3385.8'

1960.86

99.83 Ac.
Lot 8 Pt.

207-267
37.175 Ac.
Lot 7 Pt.

Lee & Barbara Headlee
Tot. 167.175 Ac.

U.S.A.
94-472
Tot. Ac. 159.37

207-17
100.0 Ac.
Lot 8 Pt.

26

2217.60'

2217.60'

SEC. 8

207-267
30.0 Ac.
Lot 7 Pt.

1355.64'

1483.02'

1960.86'

Guy Conner
200-514
24.69 Ac.
Lot 5 Pt.

Edna Harkless, Et al
112-19, 211-614
14.0 Ac.
Lot 4 Pt.

George W. Stanbery
144-122
7.0 Ac.

Ferne Stanley
*173-220 & 124-535
48.43 Ac.
Lot 6 Pt.

Willis & Julia Savely

180-446
4.07 Ac.

R.E. Allen
205-732
13.62 Ac.
Lot 5 Pt.

10.0 Ac.
Lot 5 Pt.

Marc & Deborah Wilkinson
194-609
Tot. Ac. 34.9

John & Waveline Fuller
109-417

Robert & Lynda Napier
179-695

23.21 Ac.
Lot 4 Pt.

Doyle & Kathy Hunter
200-665
2.687 Ac.
Lot 6 Pt.

Daniel Chapman
193-885
1.533 Ac.

George & Georgia Bartram
197-284, 288
17.26 Ac *
Lot 3 Pt.

59.54 Ac.
Lot 3 Pt.

U.S.A.
94-472
Tot. Sec. Ac. 159.37

Donald R. Eggleston
142-557
28.527 Ac.
Lot 2 Pt.

Norris & Karen Armes
184-490

Morse Cem.
18-532*
.125 Ac.

Charles McCormick et al
189-17(*See Deed)
3.7 Ac.

Lincoln W. Savely

784
.125 Ac.

103-364
1.0 Ac.

Carl Zealer
213-125
1.78 Ac.

50
.50 Ac.

157-349
Terry & Debra Pierson *

SEC. 13

2682.24'

2682.24'

966.9'

SEC. 14