

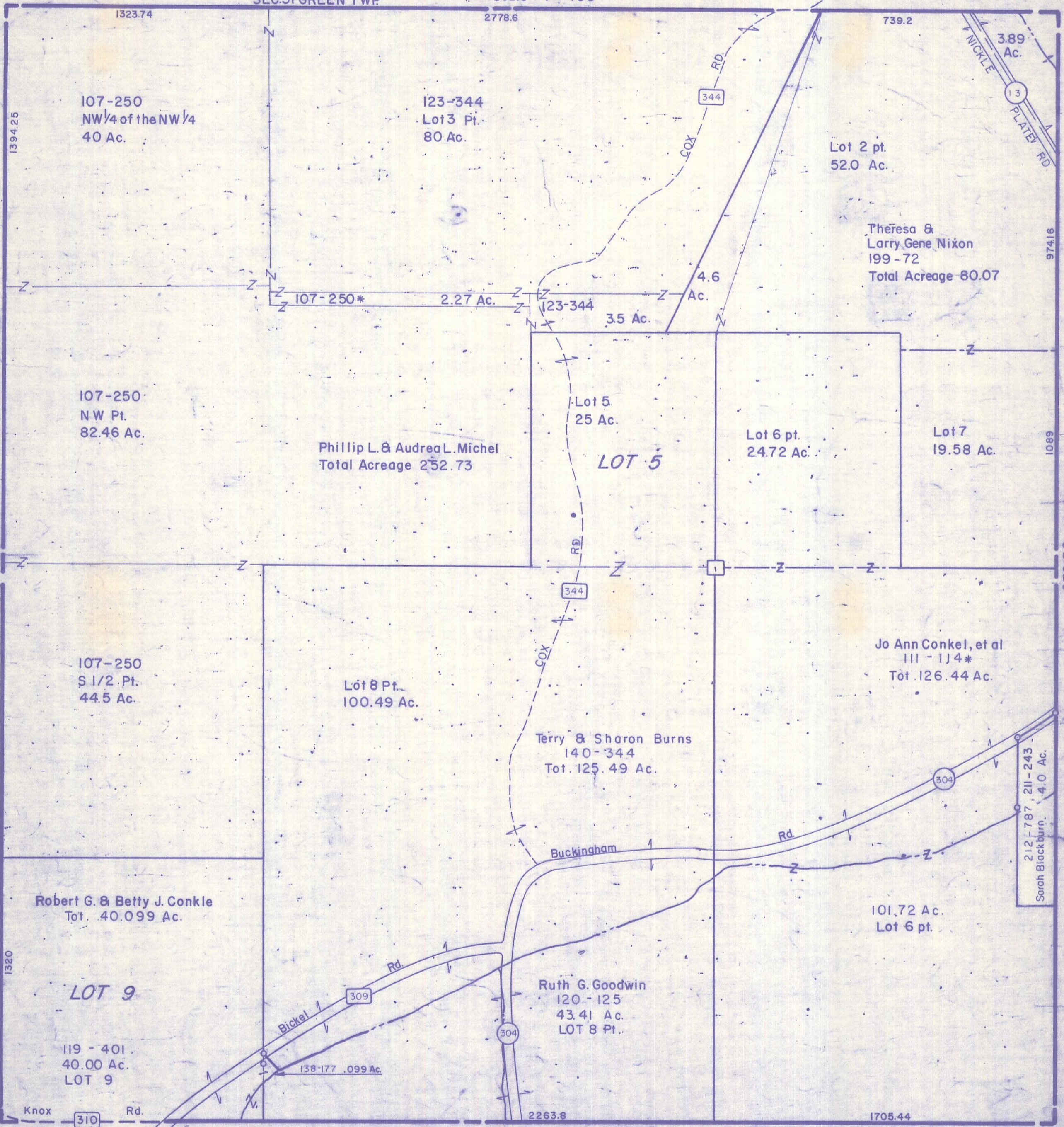
HOCKING COUNTY

Sec. 36 T. 12 R. 16

STARR TWP

Scale: 1" = 400'

SEC. 31 GREEN TWP



107-250
NW 1/4 of the NW 1/4
40 Ac.

123-344
Lot 3 Pt.
80 Ac.

Lot 2 pt.
52.0 Ac.

Theresa &
Larry Gene Nixon
199-72
Total Acreage 80.07

107-250
NW Pt.
82.46 Ac.

Phillip L. & Audrea L. Michel
Total Acreage 252.73

Lot 5.
25 Ac.

LOT 5

Lot 6 pt.
24.72 Ac.

Lot 7
19.58 Ac.

107-250
S 1/2 Pt.
44.5 Ac.

Lot 8 Pt.
100.49 Ac.

Terry & Sharon Burns
140-344
Tot. 125.49 Ac.

Jo Ann Conkel, et al
111-114*
Tot. 126.44 Ac.

Robert G. & Betty J. Conkle
Tot. 40.099 Ac.

LOT 9

119-401
40.00 Ac.
LOT 9

Ruth G. Goodwin
120-125
43.41 Ac.
LOT 8 Pt.

101.72 Ac.
Lot 6 pt.

212-787, 211-243
Sarah Block burn.
4.0 Ac.

SEC. 36