

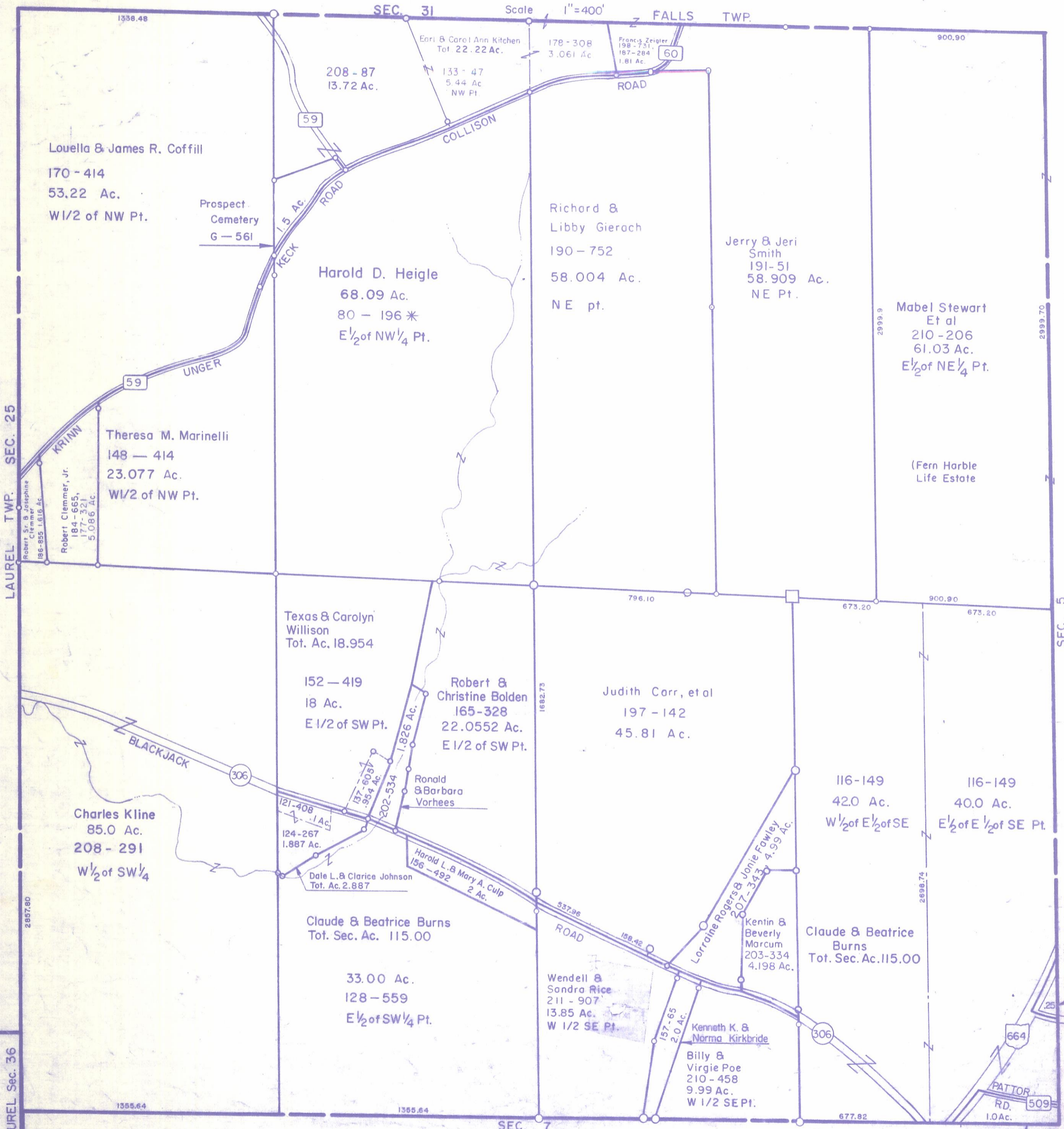
HOCKING COUNTY

Sec. 6 T13 R17

WASHINGTON TWP.

Scale 1"=400'

FALLS TWP.



Louella & James R. Coffill
170 - 414
53.22 Ac.
W1/2 of NW Pt.

208 - 87
13.72 Ac.

Earl & Carol Ann Kitchen
Tot 22.22 Ac.
133 - 47
5.44 Ac
NW Pt.

Richard &
Libby Gierach
190 - 752
58.004 Ac.
NE pt.

Jerry & Jeri
Smith
191 - 51
58.909 Ac.
NE Pt.

Mabel Stewart
Et al
210 - 206
61.03 Ac.
E1/2 of NE 1/4 Pt.

Theresa M. Marinelli
148 - 414
23.077 Ac.
W1/2 of NW Pt.

Harold D. Heigle
68.09 Ac.
80 - 196 *
E1/2 of NW 1/4 Pt.

Texas & Carolyn
Willison
Tot. Ac. 18.954

152 - 419
18 Ac.
E 1/2 of SW Pt.

Robert &
Christine Bolden
165 - 328
22.0552 Ac.
E 1/2 of SW Pt.

Judith Carr, et al
197 - 142
45.81 Ac.

116 - 149
42.0 Ac.
W 1/2 of E 1/2 of SE

116 - 149
40.0 Ac.
E 1/2 of E 1/2 of SE Pt.

Charles Kline
85.0 Ac.
208 - 291
W 1/2 of SW 1/4

Claude & Beatrice Burns
Tot. Sec. Ac. 115.00

33.00 Ac.
128 - 559
E 1/2 of SW 1/4 Pt.

Wendell &
Sandra Rice
211 - 907
13.85 Ac.
W 1/2 SE Pt.

Billy &
Virgie Poe
210 - 458
9.99 Ac.
W 1/2 SE Pt.

Claude & Beatrice
Burns
Tot. Sec. Ac. 115.00

Laura Hicks
61 - 71

SEC. 6