

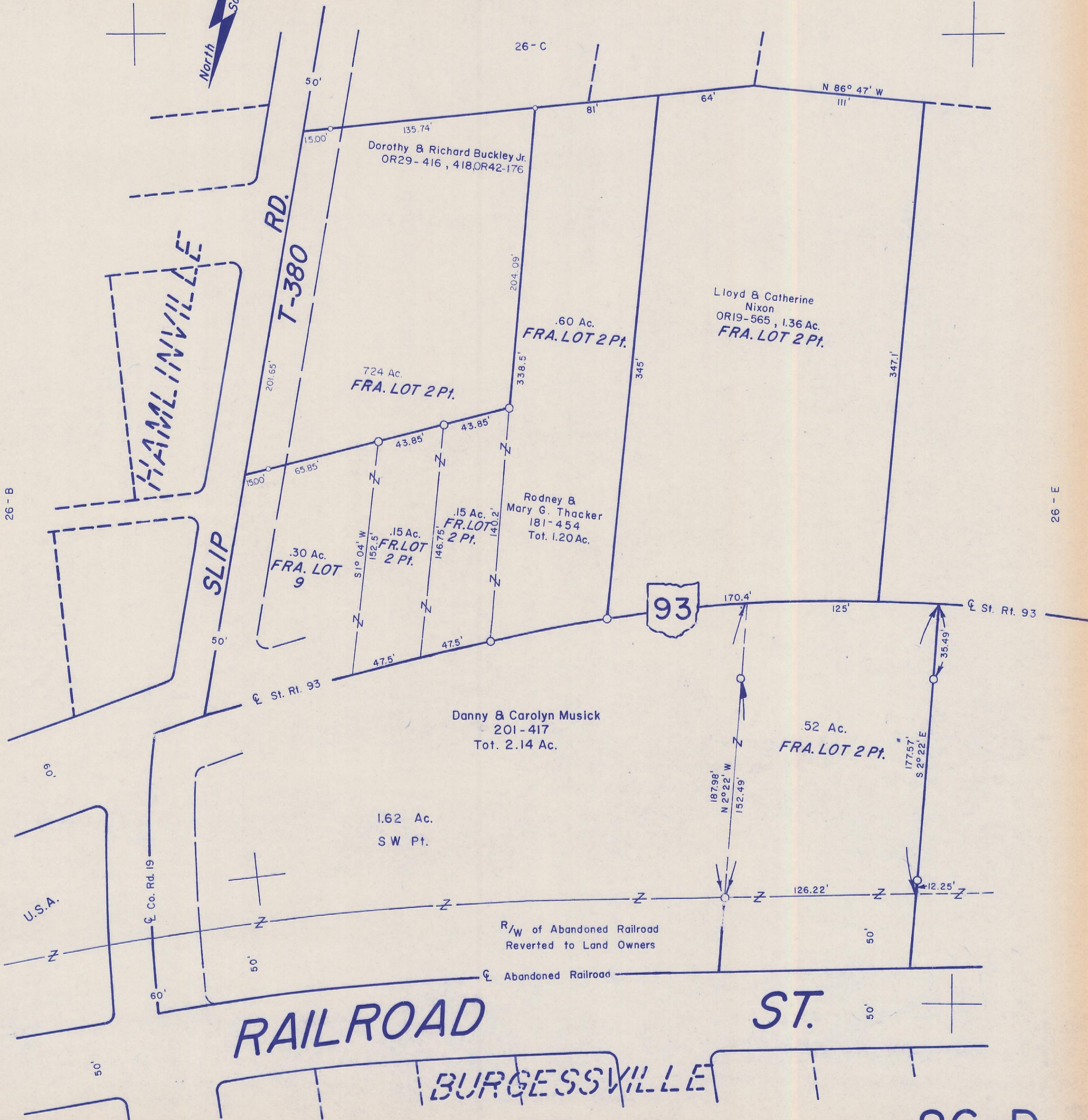
HOCKING COUNTY

FALLS GORE

SEC. 26 T 14 R 16

26-D

North
Scale 1"=50'



26-B

26-C

26-E

93

St. Rt. 93

RAILROAD

ST.

BURGESSVILLE

26-F

26-D

Dorothy & Richard Buckley Jr.
OR29-416, 418, OR42-176

Lloyd & Catherine
Nixon
OR19-565, 1.36 Ac.
FRA. LOT 2 Pt.

724 Ac.
FRA. LOT 2 Pt.

.60 Ac.
FRA. LOT 2 Pt.

Rodney &
Mary G. Thacker
181-454
Tot. 1.20 Ac.

.30 Ac.
FRA. LOT 9

.15 Ac.
FRA. LOT 2 Pt.

.15 Ac.
FRA. LOT 2 Pt.

Danny & Carolyn Musick
201-417
Tot. 2.14 Ac.

52 Ac.
FRA. LOT 2 Pt.

1.62 Ac.
SW Pt.

R/W of Abandoned Railroad
Reverted to Land Owners

Abandoned Railroad