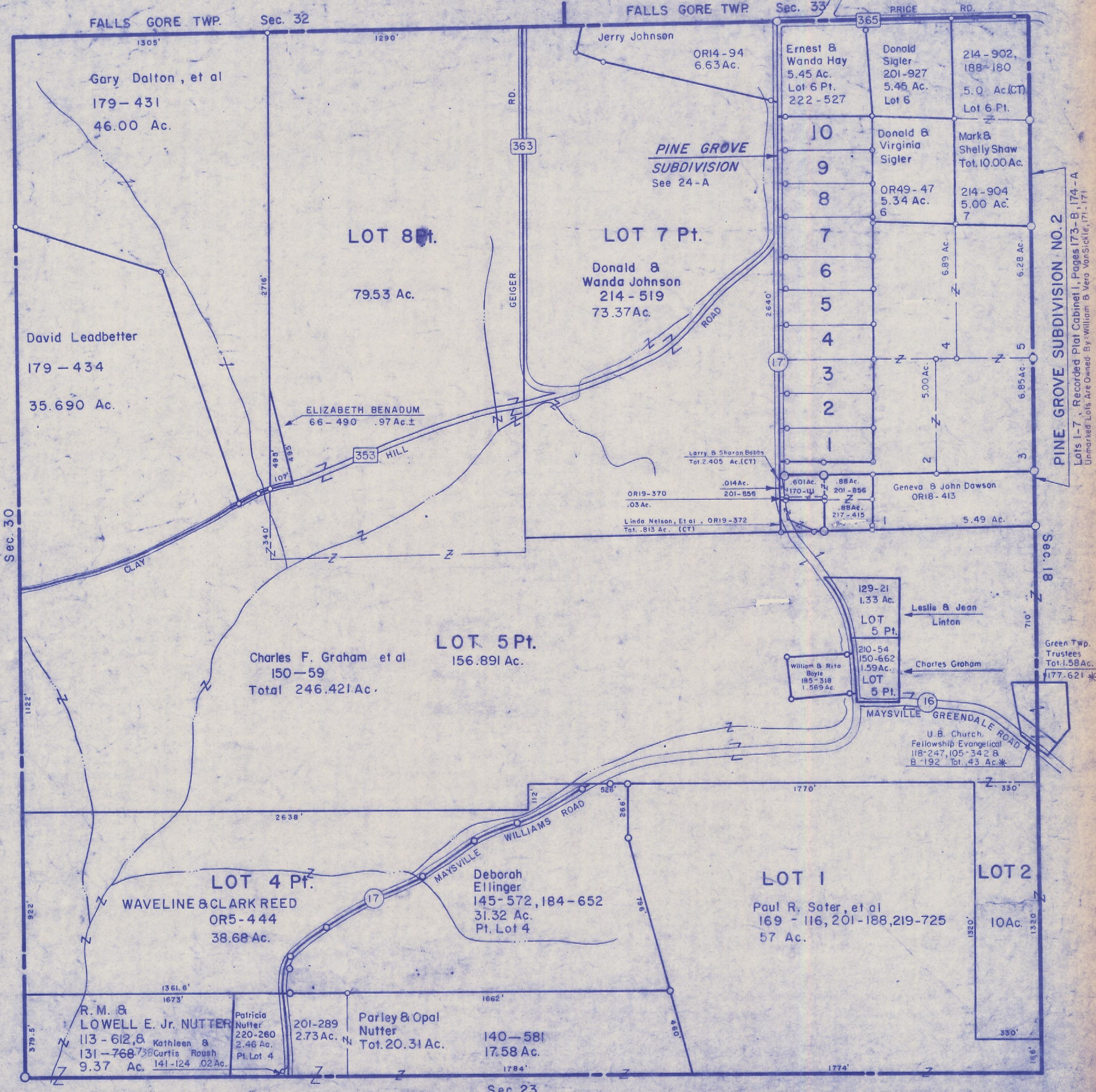


HOCKING COUNTY

Sec. 24 T13 R16

GREEN TWP
Scale 1"=400'



Sec. 30

FALLS GORE TWP.

Sec. 32

FALLS GORE TWP.

Sec. 33

PRICE RD.

Gary Dalton, et al
179-431
46.00 Ac.

David Leadbetter
179-434
35.690 Ac.

LOT 8 Pt.
79.53 Ac.

LOT 7 Pt.
Donald & Wanda Johnson
214-519
73.37 Ac.

PINE GROVE
SUBDIVISION
See 24-A

Ernest & Wanda Hay
5.45 Ac.
Lot 6 Pt.
222-527

Donald Sigler
201-927
5.45 Ac.
Lot 6

214-902,
188-180
5.0 Ac.(CT)
Lot 6 Pt.

10

9

8

7

6

5

4

3

2

1

Donald & Virginia Sigler

Mark & Shelly Shaw
Tot. 10.00 Ac.

OR49-47
5.34 Ac.
6

214-904
5.00 Ac.
7

ELIZABETH BENADUM
66-490 .97 Ac.±

Larry & Sharon Bobbs
Tot. 2.405 Ac.(CT)

OR19-370
.03 Ac.

.014 Ac.
201-856

.601 Ac.
170-111

.88 Ac.
201-856

Geneva & John Dawson
OR18-413

Linda Nelson, Et al., OR19-372
Tot. .813 Ac. (CT)

.88 Ac.
217-415

5.49 Ac.

Charles F. Graham et al
150-59
Total 246.421 Ac.

LOT 5 Pt.
156.891 Ac.

129-21
1.33 Ac.

LOT 5 Pt.

Leslie & Jean Linton

William & Rita Boyle
185-318
1.569 Ac.

210-54
150-662
1.59 Ac.

LOT 5 Pt.

Charles Graham

MAYSVILLE GREENDALE ROAD

U.B. Church,
Fellowship Evangelical
118-247, 105-342 B
B-192 Tot. 43 Ac.*

LOT 4 Pt.
WAVELINE & CLARK REED
OR5-444
38.68 Ac.

Deborah Ellinger
145-572, 184-652
31.32 Ac.
Pt. Lot 4

LOT 1
Paul R. Sater, et al
169-116, 201-188, 219-725
57 Ac.

LOT 2
10 Ac.

R. M. & LOWELL E. Jr. NUTTER
113-612, B
131-768, 738
9.37 Ac.

Patricia Nutter
220-260
2.46 Ac.
Pt. Lot 4

201-289
2.73 Ac.

Parley & Opal Nutter
Tot. 20.31 Ac.

140-581
17.58 Ac.

Sec. 23

SEC. 24

PINE GROVE SUBDIVISION NO. 2
Lots 1-7, Recorded Plat Cabinet 1, Pages 173-B, 174-A
Unauthorized Lots Are Owned By: William & Vera VanStickle, 171-171

Green Twp.
Trustees
Tot. 1.58 Ac.
177-621 *