

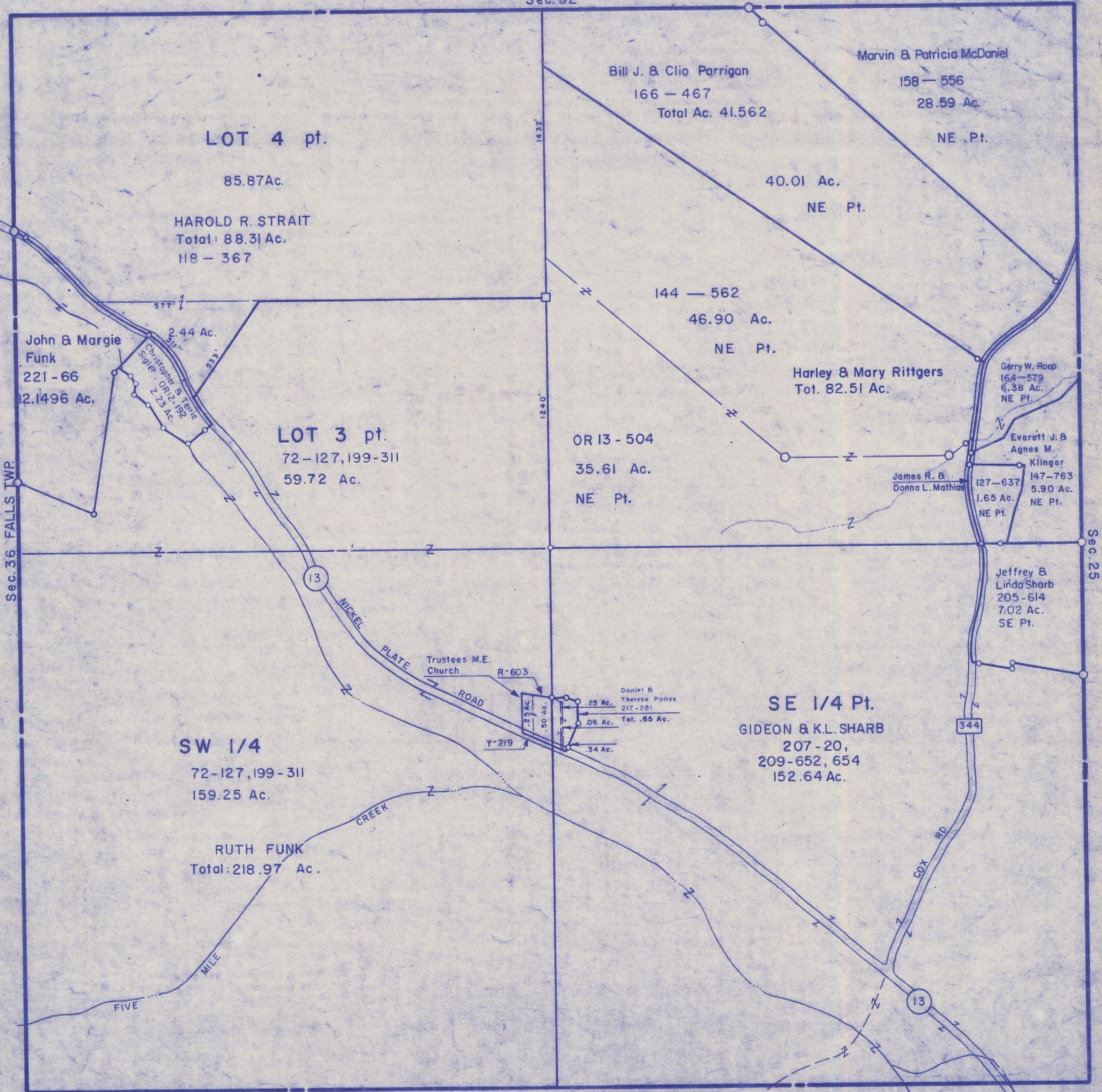
HOCKING COUNTY

Sec. 31 T13 R16

GREEN TWP

Scale 1"=400'

Sec. 32



LOT 4 pt.

85.87Ac.

HAROLD R. STRAIT  
Total: 88.31 Ac.  
118 - 367

LOT 3 pt.

72-127,199-311  
59.72 Ac.

SW 1/4

72-127,199-311  
159.25 Ac.

RUTH FUNK  
Total: 218.97 Ac.

Bill J. & Clio Parrigan  
166 - 467  
Total Ac. 41.562

Marvin & Patricia McDaniel  
158 - 556  
28.59 Ac.  
NE Pt.

40.01 Ac.  
NE Pt.

144 - 562  
46.90 Ac.  
NE Pt.

Harley & Mary Rittgers  
Tot. 82.51 Ac.

Gerry W. Roop  
164-579  
6.38 Ac.  
NE Pt.

OR 13 - 504  
35.61 Ac.  
NE Pt.

Everett J. & Agnes M. Klinger  
147-763  
5.90 Ac.  
NE Pt.

James R. & Donna L. Mathias  
127-637  
1.65 Ac.  
NE Pt.

Jeffrey & Linda Shorb  
205-614  
7.02 Ac.  
SE Pt.

SE 1/4 Pt.  
GIDEON & K.L. SHARB  
207 - 20,  
209 - 652, 654  
152.64 Ac.

Trustees M.E. Church  
R-603

Daniel B. Theresa Pollex  
217-281  
Tot. .65 Ac.

Y-219

Sec. 36 FALLS TWP.

Sec. 25

Sec. 36 STARR TWP.

344

SEC. 31