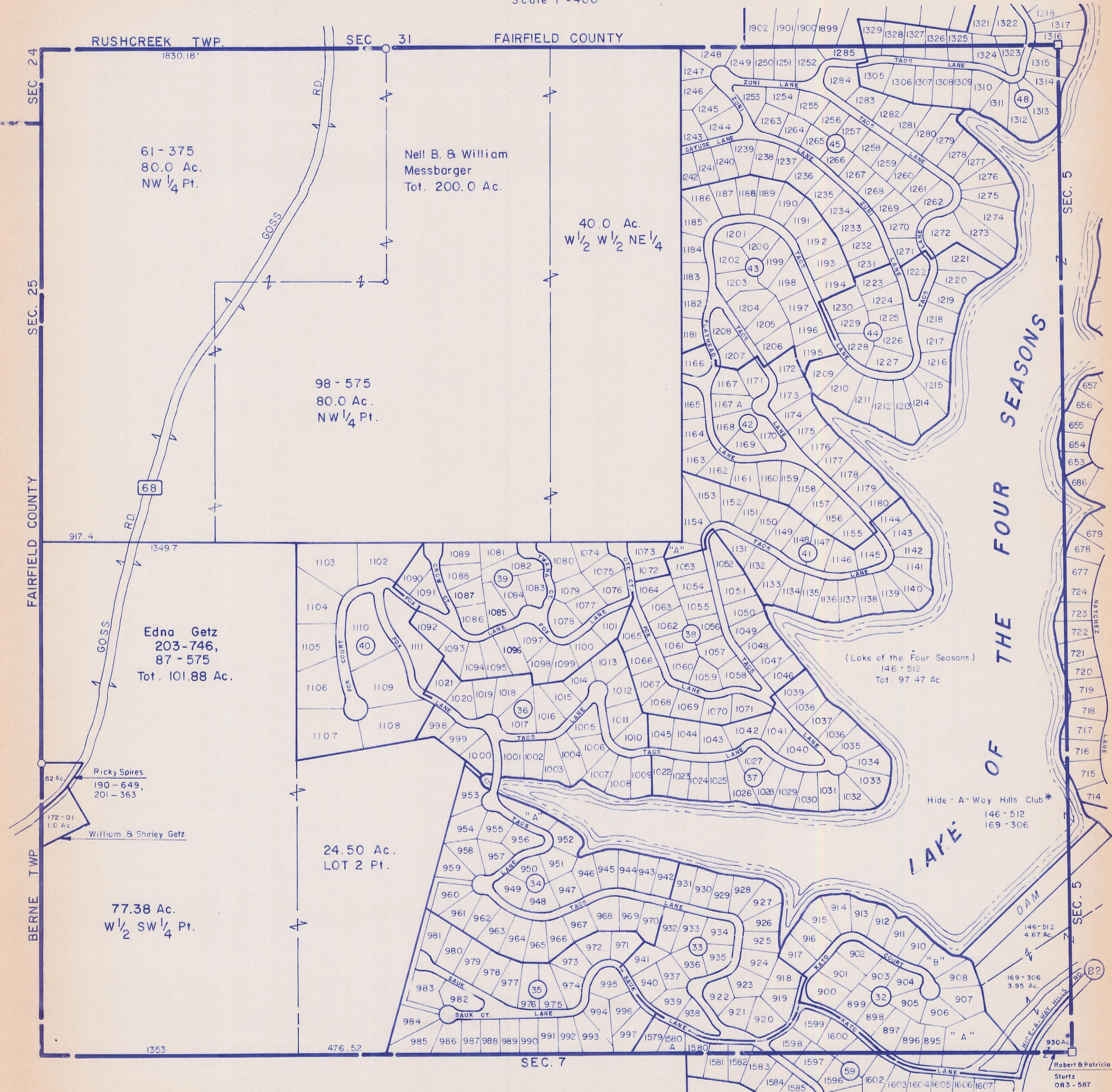


HOCKING COUNTY

MARION TWP.

SEC. 6 T15 R17

Scale 1"=400'



61 - 375  
80.0 Ac.  
NW 1/4 Pt.

Nell B. & William  
Messbarger  
Tot. 200.0 Ac.

40.0 Ac.  
W 1/2 W 1/2 NE 1/4

98 - 575  
80.0 Ac.  
NW 1/4 Pt.

Edna Getz  
203-746,  
87-575  
Tot. 101.88 Ac.

Ricky Spires  
190-649,  
201-363

William & Shirley Getz

77.38 Ac.  
W 1/2 SW 1/4 Pt.

24.50 Ac.  
LOT 2 Pt.

Hide-A-Way Hills Club\*  
146-512  
169-306

SEC. 6

Robert B Patricia  
Sturtz  
OR3-587