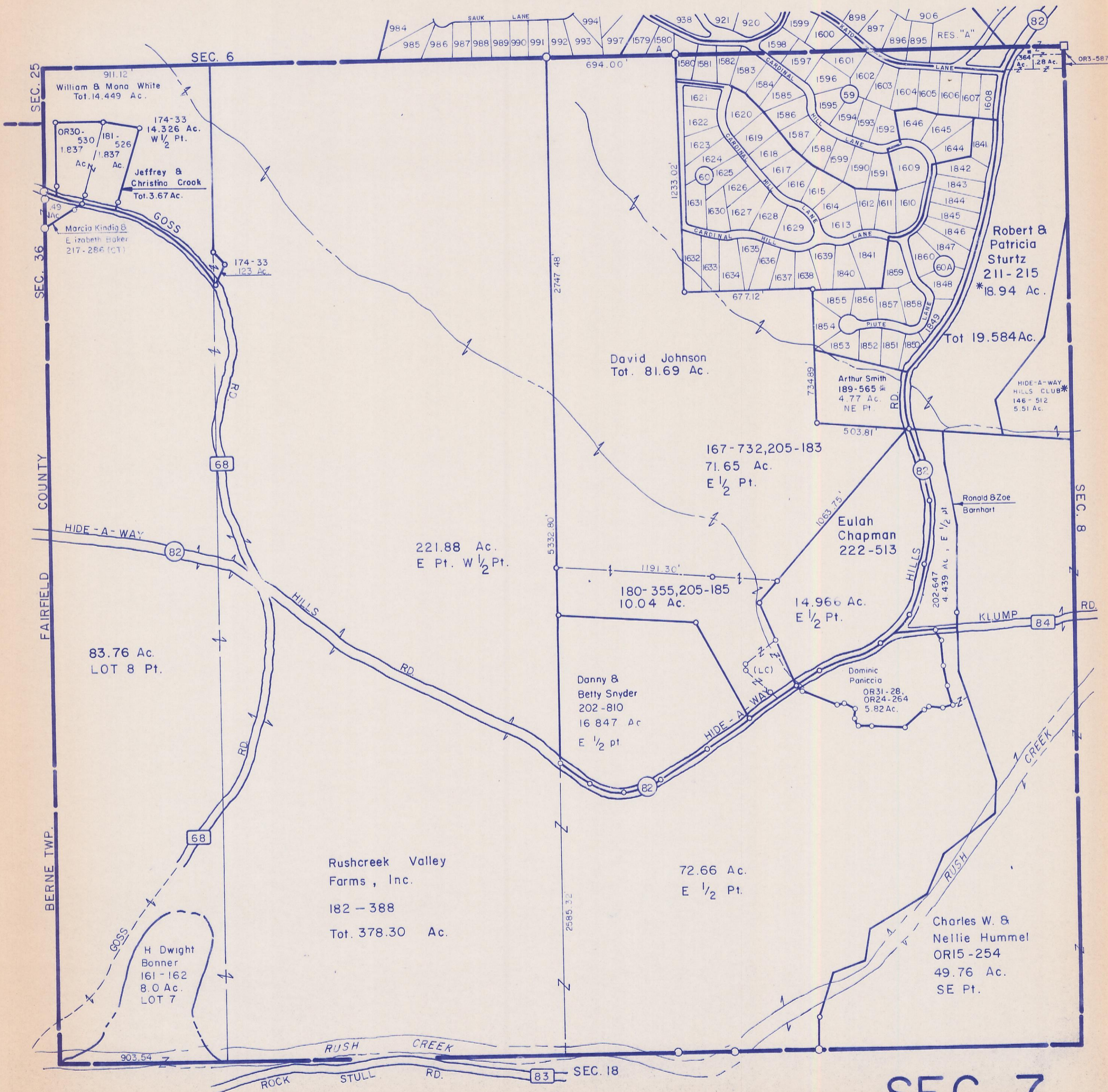


HOCKING COUNTY

MARION TWP.

SEC. 7 T15 R17

Scale 1"=400'



SEC. 7

William & Mona White  
Tot. 14.449 Ac.

174-33  
14.326 Ac.  
W 1/2 Pt.

Jeffrey &  
Christina Crook  
Tot. 3.67 Ac.

Marcia Kindig &  
Elizabeth Baker  
217-286 (CT)

174-33  
123 Ac.

David Johnson  
Tot. 81.69 Ac.

Robert &  
Patricia  
Sturtz  
211-215  
\*18.94 Ac.

Tot 19.584 Ac.

Arthur Smith  
189-565 #  
4.77 Ac.  
NE Pt.

HIDE-A-WAY  
HILLS CLUB\*  
146-512  
5.51 Ac.

167-732,205-183  
71.65 Ac.  
E 1/2 Pt.

Eulah  
Chapman  
222-513

221.88 Ac.  
E Pt. W 1/2 Pt.

180-355,205-185  
10.04 Ac.

14.966 Ac.  
E 1/2 Pt.

Danny &  
Betty Snyder  
202-810  
16 847 Ac  
E 1/2 pt

Dominic  
Paniccio  
OR31-28,  
OR24-264  
5.82 Ac.

83.76 Ac.  
LOT 8 Pt.

Rushcreek Valley  
Farms, Inc.  
182-388  
Tot. 378.30 Ac.

72.66 Ac.  
E 1/2 Pt.

Charles W. &  
Nellie Hummel  
OR15-254  
49.76 Ac.  
SE Pt.

H Dwight  
Bonner  
161-162  
8.0 Ac.  
LOT 7