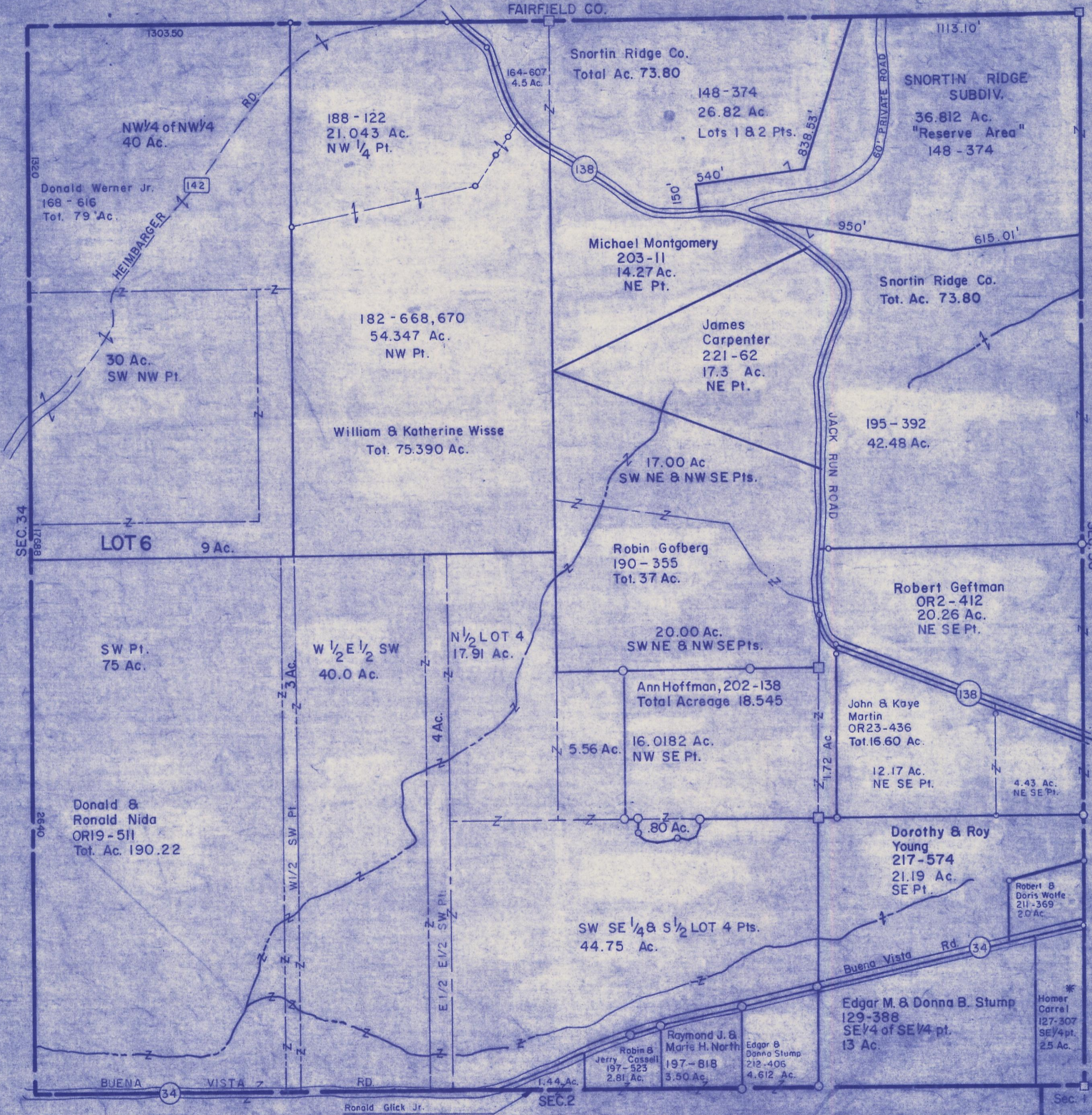


HOCKING COUNTY

Sec. 35 T13 R19 (TOP TIER)

PERRY TWP.

Scale: 1"=400'
FAIRFIELD CO.



1303.50

1113.10'

164-607
4.5 Ac.

148-374
26.82 Ac.
Lots 1 & 2 Pts.

188-122
21.043 Ac.
NW 1/4 Pt.

142

HEIMBARGER RD.

138

150'

540'

838.53'

60' PRIVATE ROAD

SNORTIN RIDGE SUBDIV.
36.812 Ac.
"Reserve Area"
148-374

Donald Werner Jr.
168-616
Tot. 79 Ac.

1320

182-668,670
54.347 Ac.
NW Pt.

Michael Montgomery
203-11
14.27 Ac.
NE Pt.

950'

615.01'

Snortin Ridge Co.
Tot. Ac. 73.80

James Carpenter
221-62
17.3 Ac.
NE Pt.

30 Ac.
SW NW Pt.

195-392
42.48 Ac.

JACK RUN ROAD

William & Katherine Wisse
Tot. 75.390 Ac.

17.00 Ac
SW NE & NW SE Pts.

190-355
Tot. 37 Ac.

20.00 Ac.
SW NE & NW SE Pts.

195-412
20.26 Ac.
NE SE Pt.

LOT 6 9 Ac.

SW Pt.
75 Ac.

W 1/2 E 1/2 SW
40.0 Ac.

N 1/2 LOT 4
17.91 Ac.

Ann Hoffman, 202-138
Total Acreage 18.545

John & Kaye Martin
OR23-436
Tot. 16.60 Ac.

16.0182 Ac.
NW SE Pt.

5.56 Ac.

12.17 Ac.
NE SE Pt.

4.43 Ac.
NE SE Pt.

Donald & Ronald Nida
OR19-511
Tot. Ac. 190.22

W 1/2 SW Pt.
3 Ac.

N 4 Ac.

4 Ac.

1.72 Ac.

Dorothy & Roy Young
217-574
21.19 Ac.
SE Pt.

Robert B. & Doris Wolfe
211-369
2.0 Ac.

SW SE 1/4 & S 1/2 LOT 4 Pts.
44.75 Ac.

80 Ac.

Buena Vista Rd. 34

Edgar M. & Donna B. Stump
129-388
SE 1/4 of SE 1/4 pt.
13 Ac.

Robin & Jerry Cassell
197-523
2.81 Ac.

Raymond J. & Marie H. North
197-818
3.50 Ac.

Edgar & Donna Stump
212-406
4.612 Ac.

Homer Carrel
127-307
SE 1/4 pt.
2.5 Ac.

1.44 Ac.

SEC. 2

Ronald Glick Jr.
OR5-248, 250

SEC. 34

SEC. 36

SEC. 35
(TOP TIER)