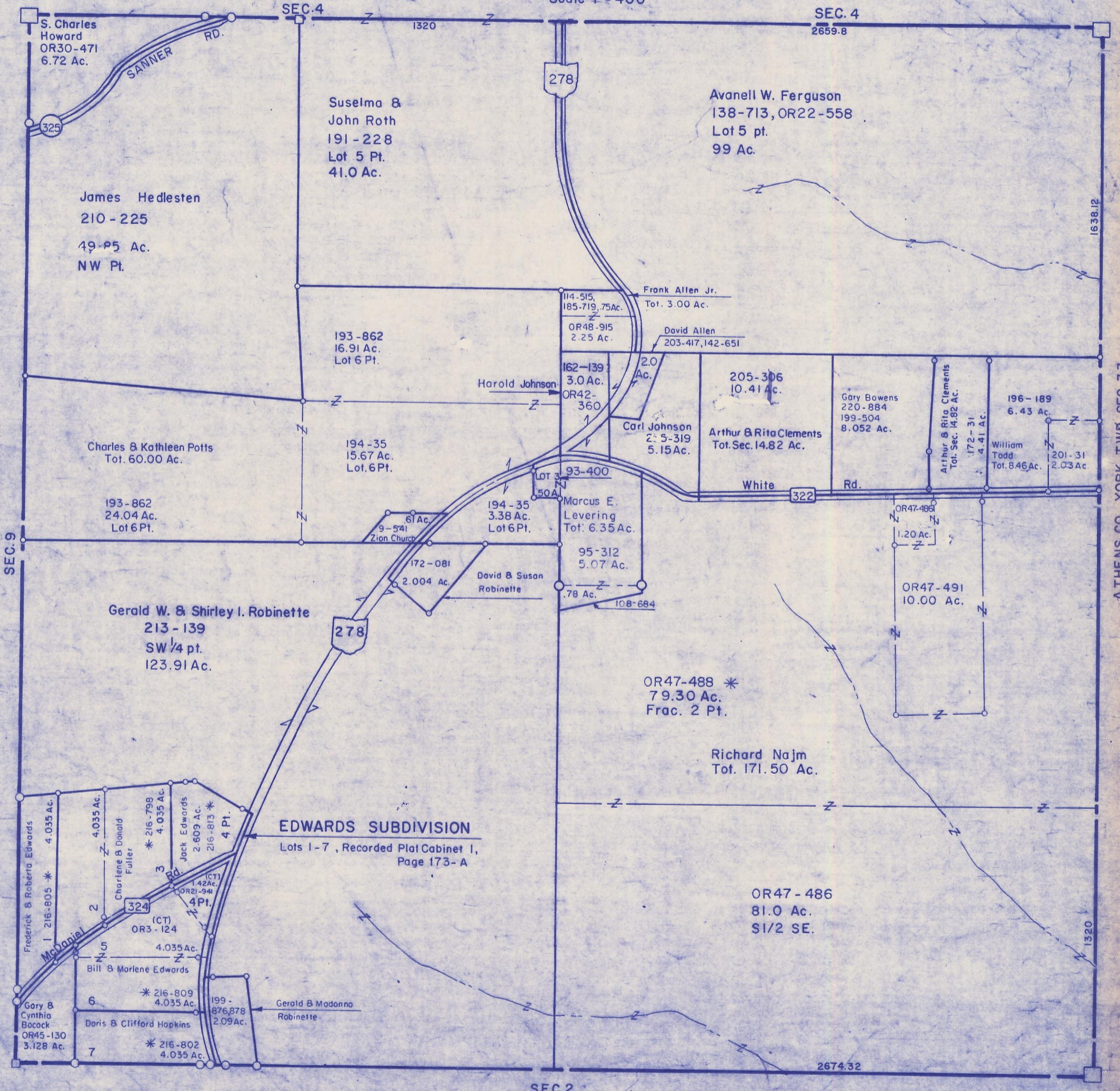


HOCKING COUNTY

Sec. 3 T 12 R 16

STARR TWP.

Scale: 1" = 400'



S. Charles Howard
OR30-471
6.72 Ac.

James Hedlesten
210-225
49.95 Ac.
NW Pt.

Suselma &
John Roth
191-228
Lot 5 Pt.
41.0 Ac.

Avanell W. Ferguson
138-713, OR22-558
Lot 5 pt.
99 Ac.

Charles & Kathleen Potts
Tot. 60.00 Ac.

193-862
24.04 Ac.
Lot 6 Pt.

193-862
16.91 Ac.
Lot 6 Pt.

194-35
15.67 Ac.
Lot 6 Pt.

Harold Johnson
162-139
3.0 Ac.
OR42-360

114-515,
185-719, 75 Ac.
OR48-915
2.25 Ac.

Frank Allen Jr.
Tot. 3.00 Ac.

David Allen
203-417, 142-651

205-306
10.41 Ac.

Gary Bowns
220-884
199-504
8.052 Ac.

Arthur & Rita Clements
Tot. Sec. 14.82 Ac.

196-189
6.43 Ac.

William Todd
Tot. 8.46 Ac.

201-31
2.03 Ac.

Gerald W. & Shirley I. Robinette
213-139
SW 1/4 pt.
123.91 Ac.

172-081
2.004 Ac.

David & Susan
Robinette

Marcus E.
Levering
Tot. 6.35 Ac.

95-312
5.07 Ac.

OR47-488 *
79.30 Ac.
Frac. 2 Pt.

Richard Najm
Tot. 171.50 Ac.

EDWARDS SUBDIVISION

Lots 1-7, Recorded Plat Cabinet I,
Page 173-A

Frederick & Roberta Edwards
1-216-805 *
4.035 Ac.

Charlene & Donald Fuller
* 216-798
4.035 Ac.

Jack Edwards
2-609 Ac.
216-813 *
4 Pt.

Bill & Marlene Edwards
4.035 Ac.

Gary & Cynthia Bocock
OR45-130
3.128 Ac.

Doris & Clifford Hopkins
* 216-809
4.035 Ac.

* 216-802
4.035 Ac.

OR47-486
81.0 Ac.
S1/2 SE.

SEC. 3