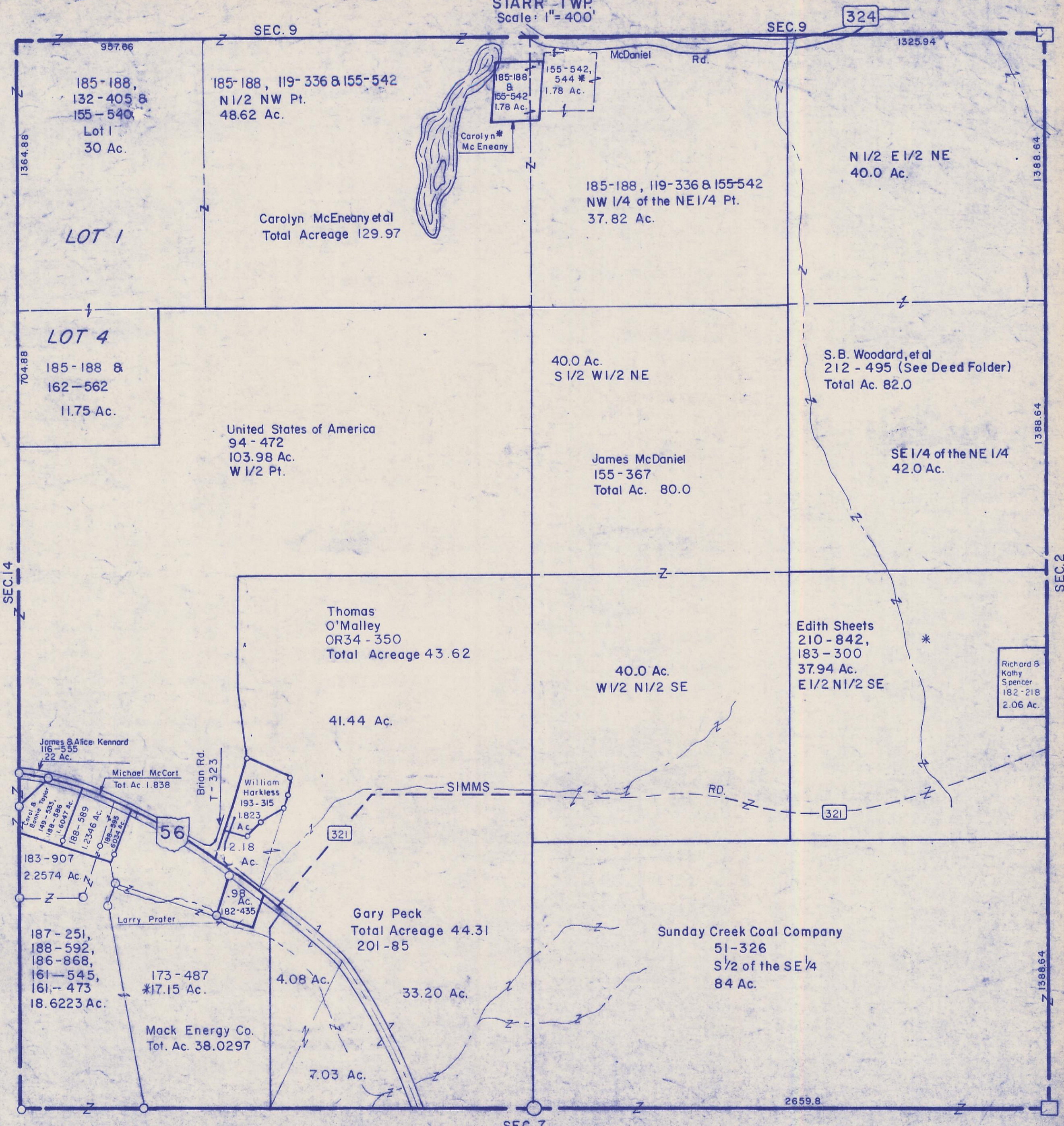


HOCKING COUNTY

Sec. 8 T 12 R 16

STARR TWP.

Scale: 1" = 400'



185-188,
132-405 &
155-540
Lot 1
30 Ac.

185-188, 119-336 & 155-542
N 1/2 NW Pt.
48.62 Ac.

185-188 &
155-542
1.78 Ac.

155-542,
544 *
1.78 Ac.

Carolyn *
Mc Eneaney

185-188, 119-336 & 155-542
NW 1/4 of the NE 1/4 Pt.
37.82 Ac.

N 1/2 E 1/2 NE
40.0 Ac.

LOT 1

Carolyn McEneaney et al
Total Acreage 129.97

LOT 4

185-188 &
162-562
11.75 Ac.

United States of America
94-472
103.98 Ac.
W 1/2 Pt.

40.0 Ac.
S 1/2 W 1/2 NE

S. B. Woodard, et al
212-495 (See Deed Folder)
Total Ac. 82.0

James McDaniel
155-367
Total Ac. 80.0

SE 1/4 of the NE 1/4
42.0 Ac.

Thomas
O'Malley
OR34-350
Total Acreage 43.62

40.0 Ac.
W 1/2 N 1/2 SE

Edith Sheets
210-842,
183-300
37.94 Ac.
E 1/2 N 1/2 SE

Richard B
Kathy
Spencer
182-218
2.06 Ac.

James & Alice Kennard
116-555
22 Ac.

Michael McCort
Tot. Ac. 1.838

William
Harkless
193-315
1.823
Ac.

Carol &
Bonnie
Troyer
149-533,
188-586
1.6047 Ac.

188-589
1.2346 Ac.

183-907
2.2574 Ac.

187-251,
188-592,
186-868,
161-545,
161-473
18.6223 Ac.

173-487
*17.15 Ac.

Mack Energy Co.
Tot. Ac. 38.0297

Gary Peck
Total Acreage 44.31
201-85

Sunday Creek Coal Company
51-326
S 1/2 of the SE 1/4
84 Ac.

4.08 Ac.
33.20 Ac.

7.03 Ac.

2659.8

SEC. 8