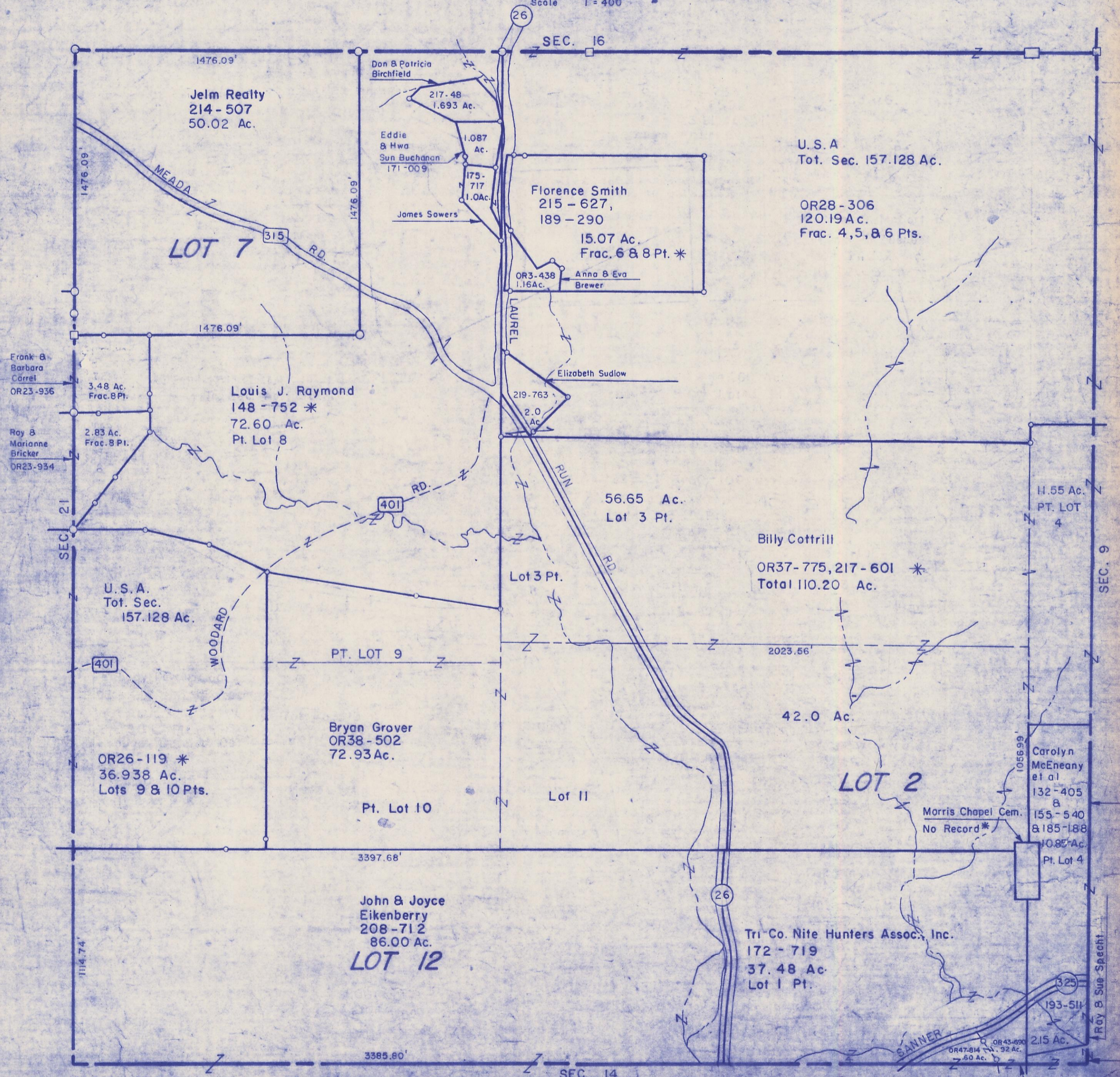


HOCKING COUNTY

STARR TWP.

SEC. 15 T-12 R-16

Scale 1" = 400'



Jelm Realty  
214-507  
50.02 Ac.

Don & Patricia  
Birchfield  
217-48  
1.693 Ac.

Eddie  
& Hwa  
Sun Buchanan  
171-009  
1.087  
Ac.

175-  
717  
1.0Ac.

James Sowers

Florence Smith  
215-627,  
189-290  
15.07 Ac.  
Frac. 6 & 8 Pt. \*

OR3-438  
1.16Ac.  
Anna & Eva  
Brewer

U.S.A  
Tot. Sec. 157.128 Ac.

OR28-306  
120.19 Ac.  
Frac. 4,5,8 & 6 Pts.

Frank &  
Barbara  
Carrel  
OR23-936

3.48 Ac.  
Frac. 8 Pt.

Louis J. Raymond  
148-752 \*  
72.60 Ac.  
Pt. Lot 8

Ray &  
Marianne  
Bricker  
OR23-934

2.83 Ac.  
Frac. 8 Pt.

219-763  
2.0  
Ac.

Elizabeth Sudlow

56.65 Ac.  
Lot 3 Pt.

11.55 Ac.  
PT. LOT  
4

Billy Cottrill

OR37-775, 217-601 \*  
Total 110.20 Ac.

U.S.A.  
Tot. Sec.  
157.128 Ac.

Lot 3 Pt.

PT. LOT 9

2023.56'

OR26-119 \*  
36.938 Ac.  
Lots 9 & 10 Pts.

Bryan Grover  
OR38-502  
72.93 Ac.

42.0 Ac.

Pt. Lot 10

Lot 11

LOT 2

Carolyn  
McEneaney  
et al  
132-405  
&  
155-540  
&  
185-188  
10.85 Ac.  
Pt. Lot 4

Morris Chapel Cem.  
No Record \*

John & Joyce  
Eikenberry  
208-712  
86.00 Ac.  
LOT 12

Tri-Co. Nite Hunters Assoc., Inc.  
172-719  
37.48 Ac.  
Lot 1 Pt.

193-511  
2.15 Ac.

OR43-650  
OR47-814  
60 Ac.

Bantford Mills  
& Harold Wright  
Tot. 1.52 Ac.

SEC. 15

SEC. 14

SEC. 21

SEC. 9

Ray & Sue Specht