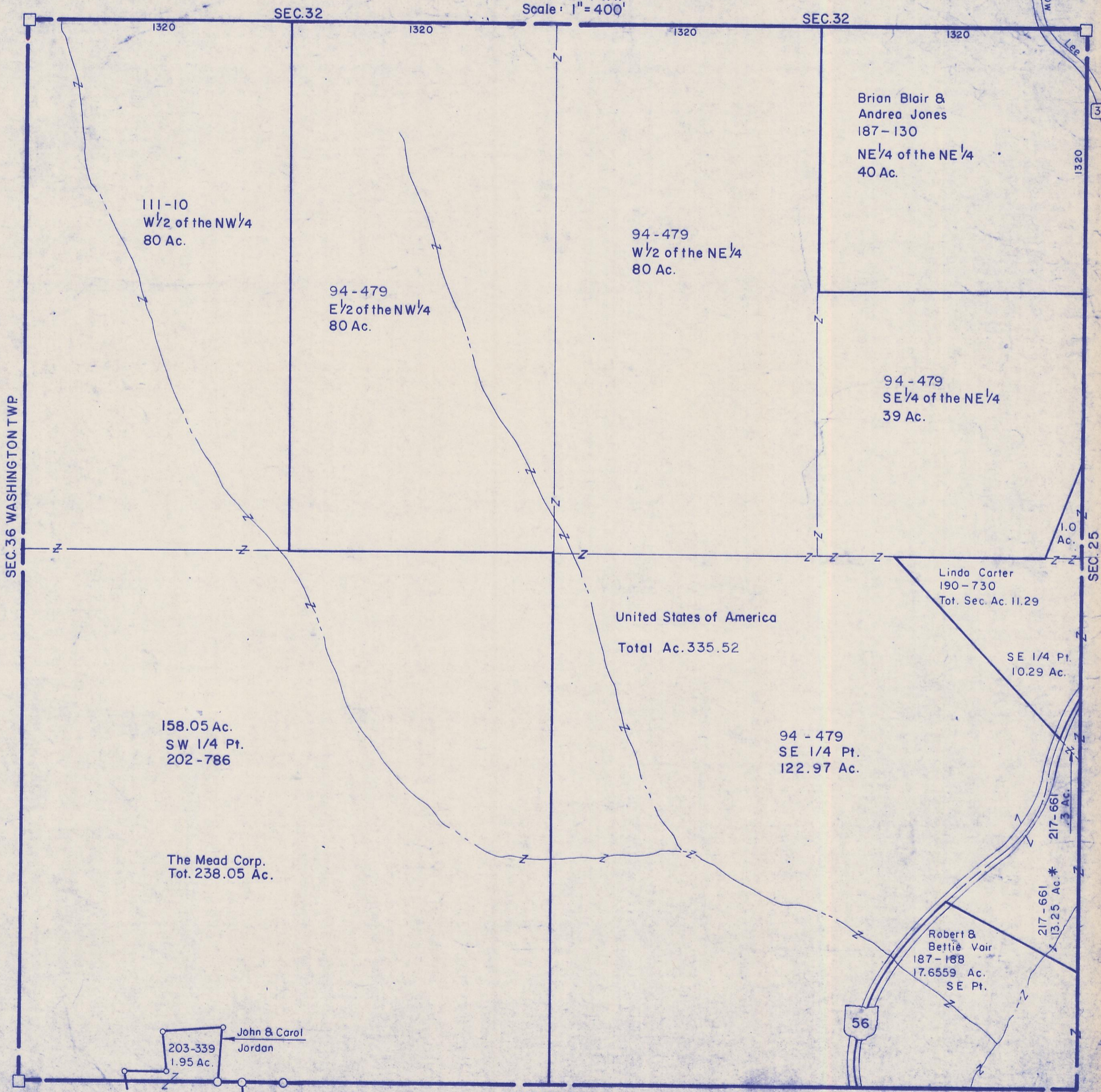


HOCKING COUNTY

Sec. 31 T 12 R 16

STARR TWP

Scale: 1" = 400'



SEC. 36 WASHINGTON TWP

SEC. 32

SEC. 32

SEC. 25

111-10
W 1/2 of the NW 1/4
80 Ac.

94-479
E 1/2 of the NW 1/4
80 Ac.

94-479
W 1/2 of the NE 1/4
80 Ac.

Brian Blair &
Andrea Jones
187-130
NE 1/4 of the NE 1/4
40 Ac.

94-479
SE 1/4 of the NE 1/4
39 Ac.

Linda Carter
190-730
Tot. Sec. Ac. 11.29

United States of America
Total Ac. 335.52

SE 1/4 Pt.
10.29 Ac.

158.05 Ac.
SW 1/4 Pt.
202-786

94-479
SE 1/4 Pt.
122.97 Ac.

The Mead Corp.
Tot. 238.05 Ac.

217-661
3 Ac.

217-661
13.25 Ac. *

Robert &
Bettie Vair
187-188
17.6559 Ac.
SE Pt.

203-339
1.95 Ac.
John & Carol
Jordan

56

VINTON CO.

SEC. 31