

HOCKING COUNTY

WARD TWP.

SEC. 1 T13 R15

Scale 1" = 400'

SEC. 2

SEC. 2

LOT 7

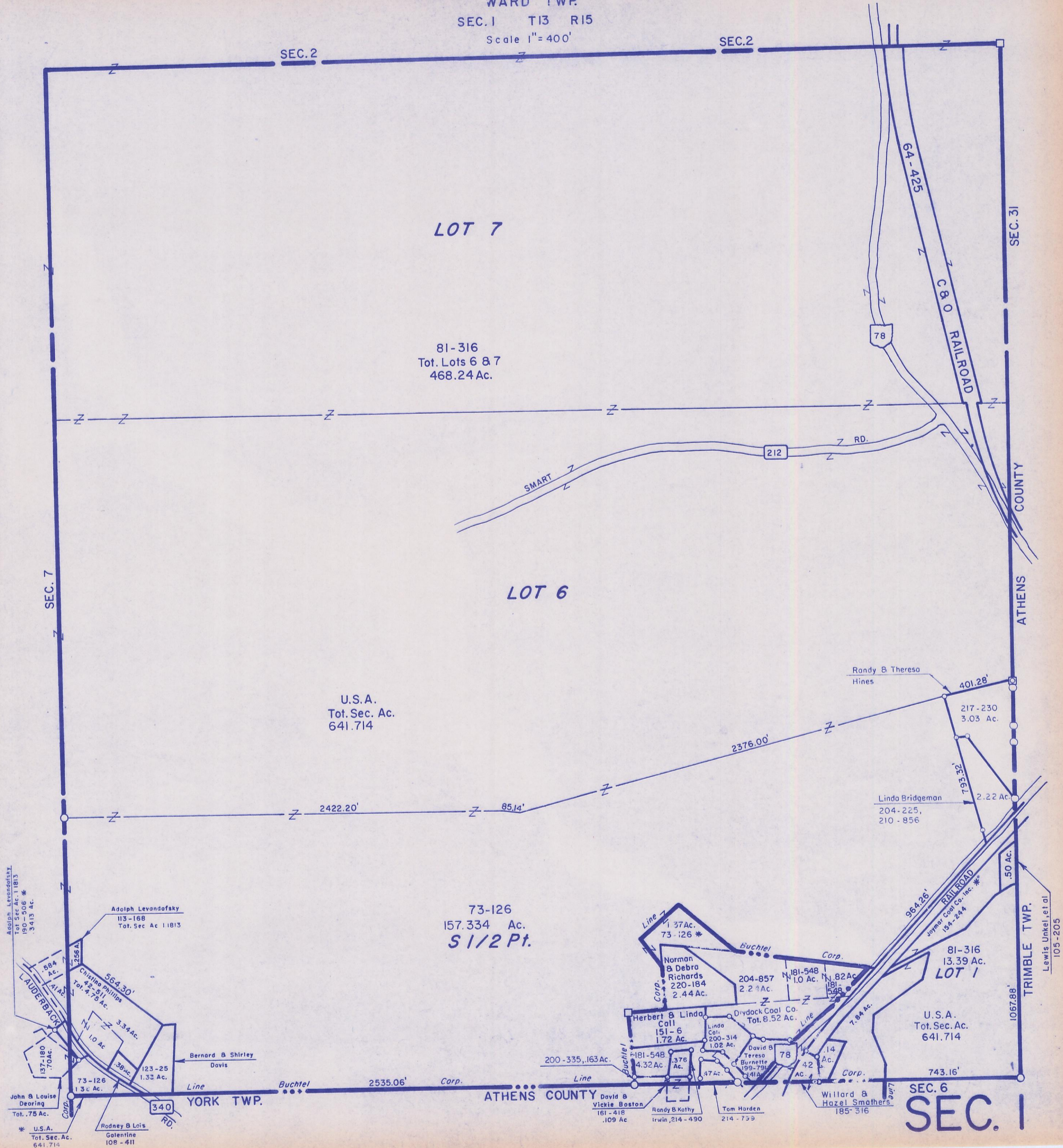
81-316
Tot. Lots 6 & 7
468.24 Ac.

LOT 6

U.S.A.
Tot. Sec. Ac.
641.714

73-126
157.334 Ac.
S 1/2 Pt.

SEC. 6
SEC. 1



Adolph Levandofsky
Tot. Sec. Ac. 1.1813
190-506 *
.3413 Ac.

Adolph Levandofsky
113-168
Tot. Sec. Ac. 1.1813

Christina Phillips
42-511
Tot. 4.75 Ac.

564.30'
1.0 Ac.

3.34 Ac.

Bernard & Shirley
Dovis

123-25
1.33 Ac.

73-126
1.3 Ac.

John & Louise
Deoring
Tot. .75 Ac.

137-180
.70 Ac.

U.S.A.
Tot. Sec. Ac.
641.714

Rodney & Lois
Golentine
108-411

LAUDERBACK

340 RD.

YORK TWP.

2535.06'

Buchtel Corp.

ATHENS COUNTY

200-335, 163 Ac.

181-548
4.32 Ac.

376
Ac.

David &
Vickie Boston
161-418
.109 Ac.

Randy & Kathy
Irwin, 214-490

Tom Harden
214-759

137 Ac.
73-126 *

Norman & Debra
Richards
220-184
2.44 Ac.

204-857
2.21 Ac.

181-548
1.0 Ac.

181-82
Ac.

Herbert & Linda
Call
151-6
1.72 Ac.

Linda Call
200-314
1.02 Ac.

David &
Teresa
Burnette
199-791
2.41 Ac.

78

14
Ac.

42
Ac.

Willard &
Hazel Smothers
185-316

964.26'

RAILROAD

Joyner Coal Co., Inc. *

154-244

81-316
13.39 Ac.
LOT 1

U.S.A.
Tot. Sec. Ac.
641.714

743.16'

1067.88'

TRIMBLE TWP.

Lewis Unkel, et al
105-205