

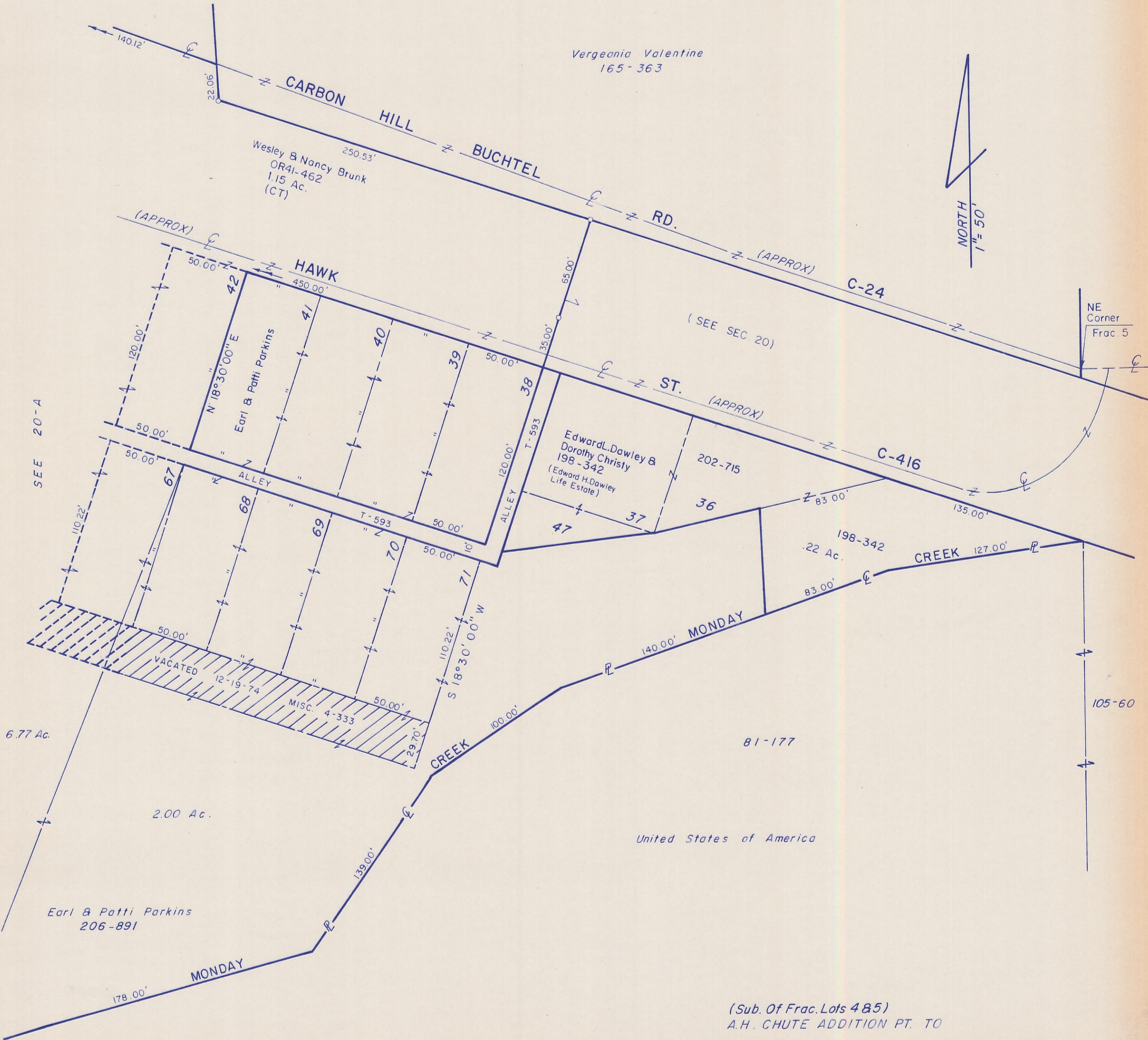
HOCKING COUNTY

WARD TWP.

SEC. 20 T 13 R 15

Vergeania Valentine  
165-363

Wesley & Nancy Brunk  
OR41-462  
1.15 Ac.  
(CT)



(Sub. Of Frac. Lots 4&5)  
A.H. CHUTE ADDITION PT. TO

CARBON HILL 20-B