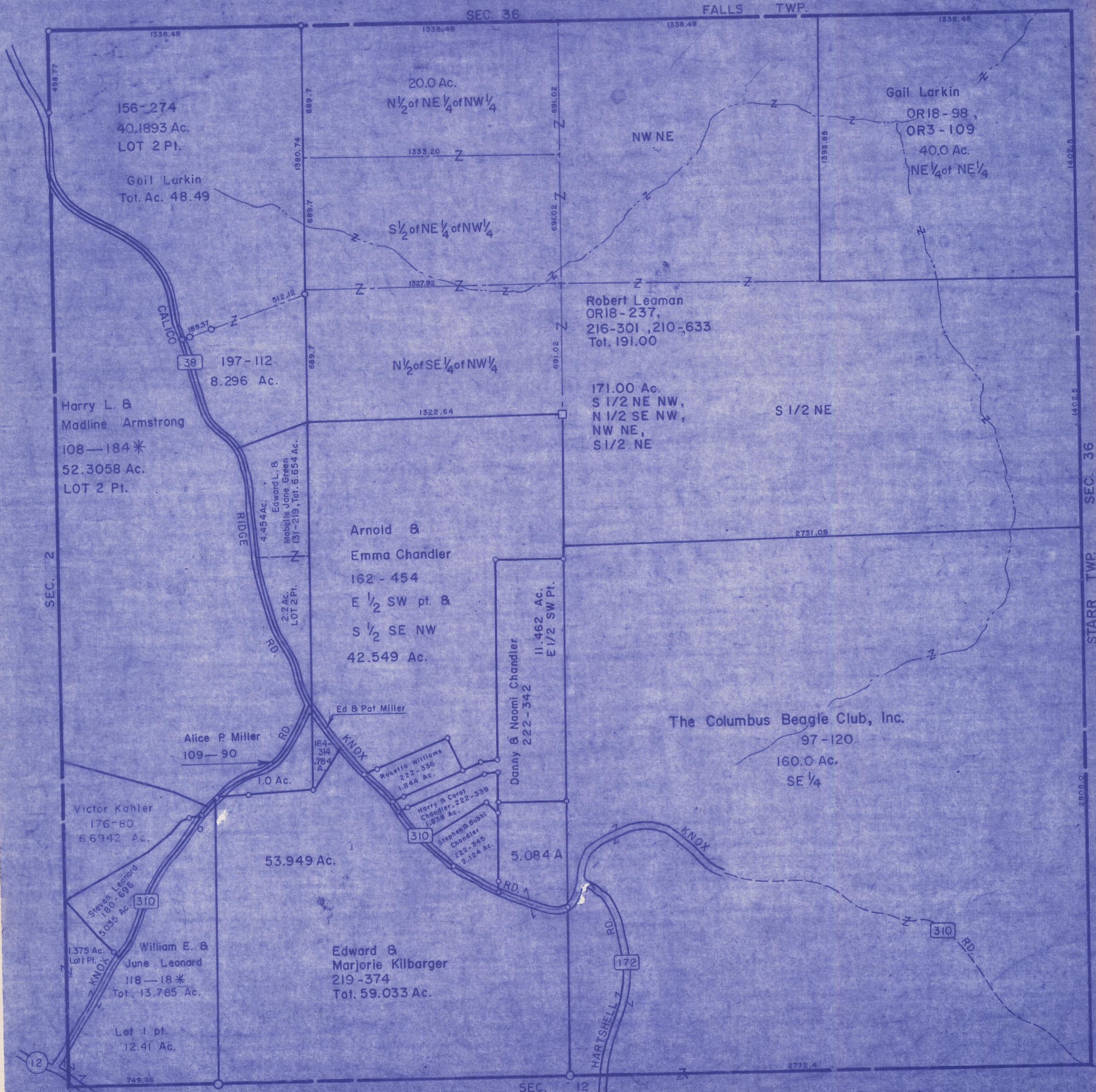


HOCKING COUNTY

Sec. 1 T13 R17

WASHINGTON TWP.

Scale 1"=400'



156-274
40.1893 Ac.
LOT 2 Pt.

Gail Larkin
Tot. Ac. 48.49

20.0 Ac.
N 1/2 of NE 1/4 of NW 1/4

Gail Larkin
OR18-98,
OR3-109
40.0 Ac.
NE 1/4 of NE 1/4

S 1/2 of NE 1/4 of NW 1/4

Robert Leaman
OR18-237,
216-301, 210-633
Tot. 191.00

197-112
8.296 Ac.

N 1/2 of SE 1/4 of NW 1/4

171.00 Ac.
S 1/2 NE NW,
N 1/2 SE NW,
NW NE,
S 1/2 NE

Harry L. &
Madline Armstrong
108-184*
52.3058 Ac.
LOT 2 Pt.

Arnold &
Emma Chandler
162-454
E 1/2 SW pt. &
S 1/2 SE NW
42.549 Ac.

The Columbus Beggle Club, Inc.
97-120
160.0 Ac.
SE 1/4

Alice P. Miller
109-90

11.462 Ac.
E 1/2 SW Pt.

Victor Kahler
176-80
6.6942 Ac.

Ed & Pat Miller

Rosetta Williams
222-336
1.844 Ac.

Harry & Carol
Chandler, 222-339
1.838 Ac.

Stephen & Bobbi
Chandler
222-345
2.124 Ac.

53.949 Ac.

Danny & Naomi Chandler
222-342

Steven Leonard
180-696
5.035 Ac.

William E. &
June Leonard
118-18*
Tot. 13.785 Ac.

Edward &
Marjorie Kilbarger
219-374
Tot. 59.033 Ac.

Lot 1 pt.
12.41 Ac.

SEC. 1