

5-12-00

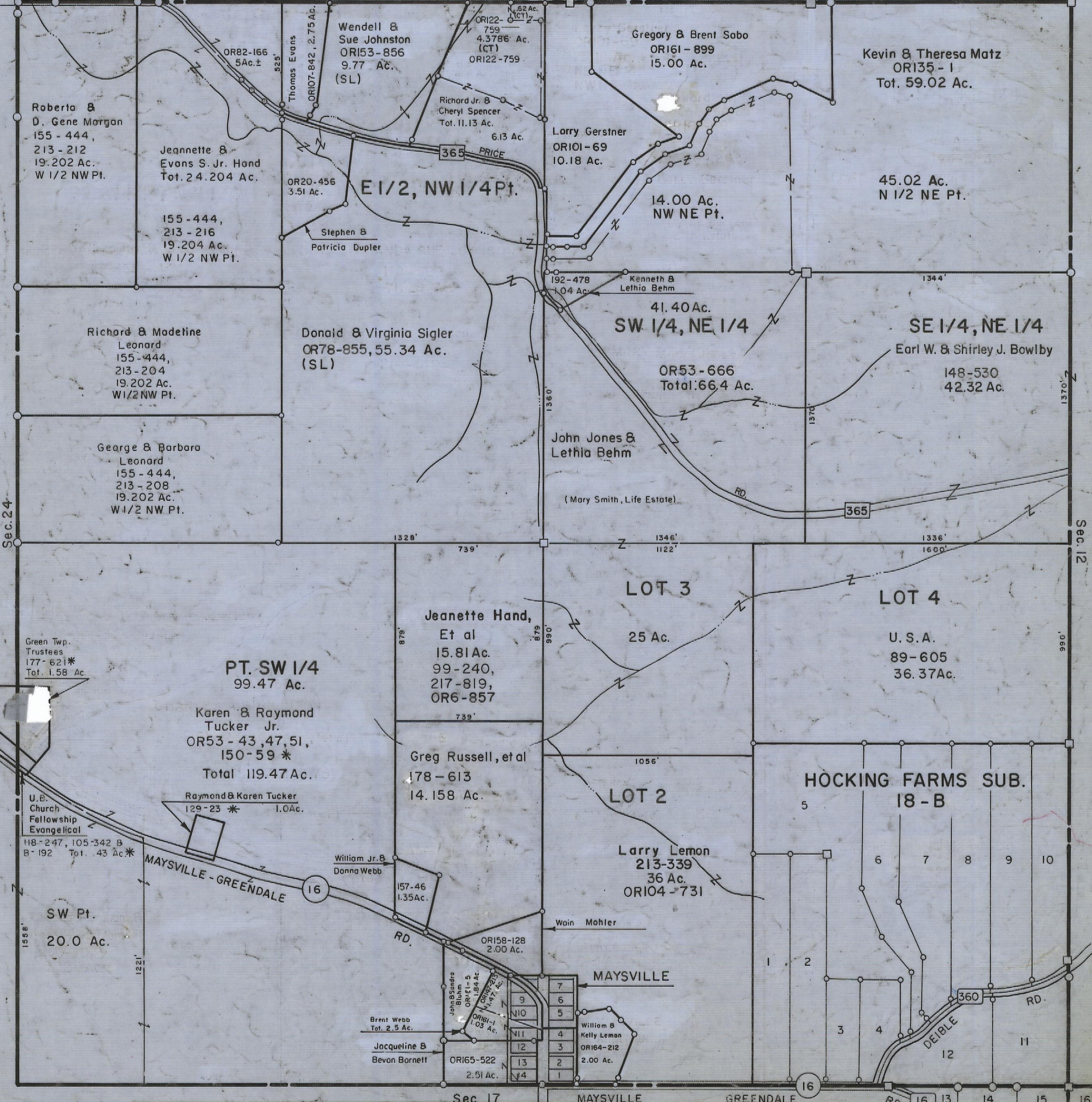
# HOCKING COUNTY

Sec. 18 T13 R16

GREEN TWP.  
Scale: 1" = 400'

Sec. 33 FALLS GORE TWP.

Sec. 34 FALLS GORE TWP.



Roberto &  
D. Gene Morgan  
155-444,  
213-212  
19.202 Ac.  
W 1/2 NW Pt.

Jeannette &  
Evans S. Jr. Hand  
Tot. 24.204 Ac.

155-444,  
213-216  
19.204 Ac.  
W 1/2 NW Pt.

Richard & Madeline  
Leonard  
155-444,  
213-204  
19.202 Ac.  
W 1/2 NW Pt.

George & Barbara  
Leonard  
155-444,  
213-208  
19.202 Ac.  
W 1/2 NW Pt.

Wendell &  
Sue Johnston  
ORI53-856  
9.77 Ac.  
(SL)

Richard Jr. &  
Cheryl Spencer  
Tot. 11.13 Ac.

Larry Gerstner  
OR101-69  
10.18 Ac.

Gregory & Brent Sobo  
OR161-899  
15.00 Ac.

Kevin & Theresa Matz  
OR135-1  
Tot. 59.02 Ac.

E 1/2, NW 1/4 Pt.

Stephen &  
Patricia Dupler

Donald & Virginia Sigler  
OR78-855, 55.34 Ac.  
(SL)

SW 1/4, NE 1/4

OR53-666  
Total: 66.4 Ac.

SE 1/4, NE 1/4

Earl W. & Shirley J. Bowlby  
148-530  
42.32 Ac.

John Jones &  
Lethia Behm

(Mary Smith, Life Estate)

PT. SW 1/4  
99.47 Ac.

Karen & Raymond  
Tucker Jr.  
OR53-43, 47, 51,  
150-59 \*  
Total 119.47 Ac.

Raymond & Karen Tucker  
129-23 \* 1.0 Ac.

Jeanette Hand,  
Et al  
15.81 Ac.  
99-240,  
217-819,  
OR6-857

Greg Russell, et al  
178-613  
14.158 Ac.

LOT 3

25 Ac.

LOT 4

U. S. A.  
89-605  
36.37 Ac.

HOCKING FARMS SUB.  
18-B

LOT 2

Larry Lemon  
213-339  
36 Ac.  
OR104-731

Green Twp.  
Trustees  
177-621 \*  
Tot. 1.58 Ac.

U. B.  
Church  
Fellowship  
Evangelical  
118-247, 105-342 &  
B-192 Tot. 43 Ac. \*

SW Pt.  
20.0 Ac.

William Jr. &  
Donna Webb  
157-46  
1.35 Ac.

ORI58-128  
2.00 Ac.

John & Sandra  
Blum  
ORI1-5  
1.84 Ac.  
ORI1-1  
1.47 Ac.  
ORI1-1  
1.03 Ac.

Brent Webb  
Tot. 2.5 Ac.

Jacqueline &  
Bevan Barnett  
ORI65-522  
2.51 Ac.

William &  
Kelly Lemon  
OR164-212  
2.00 Ac.

Sec. 17

MAYSVILLE

GREENDALE

# SEC. 18