

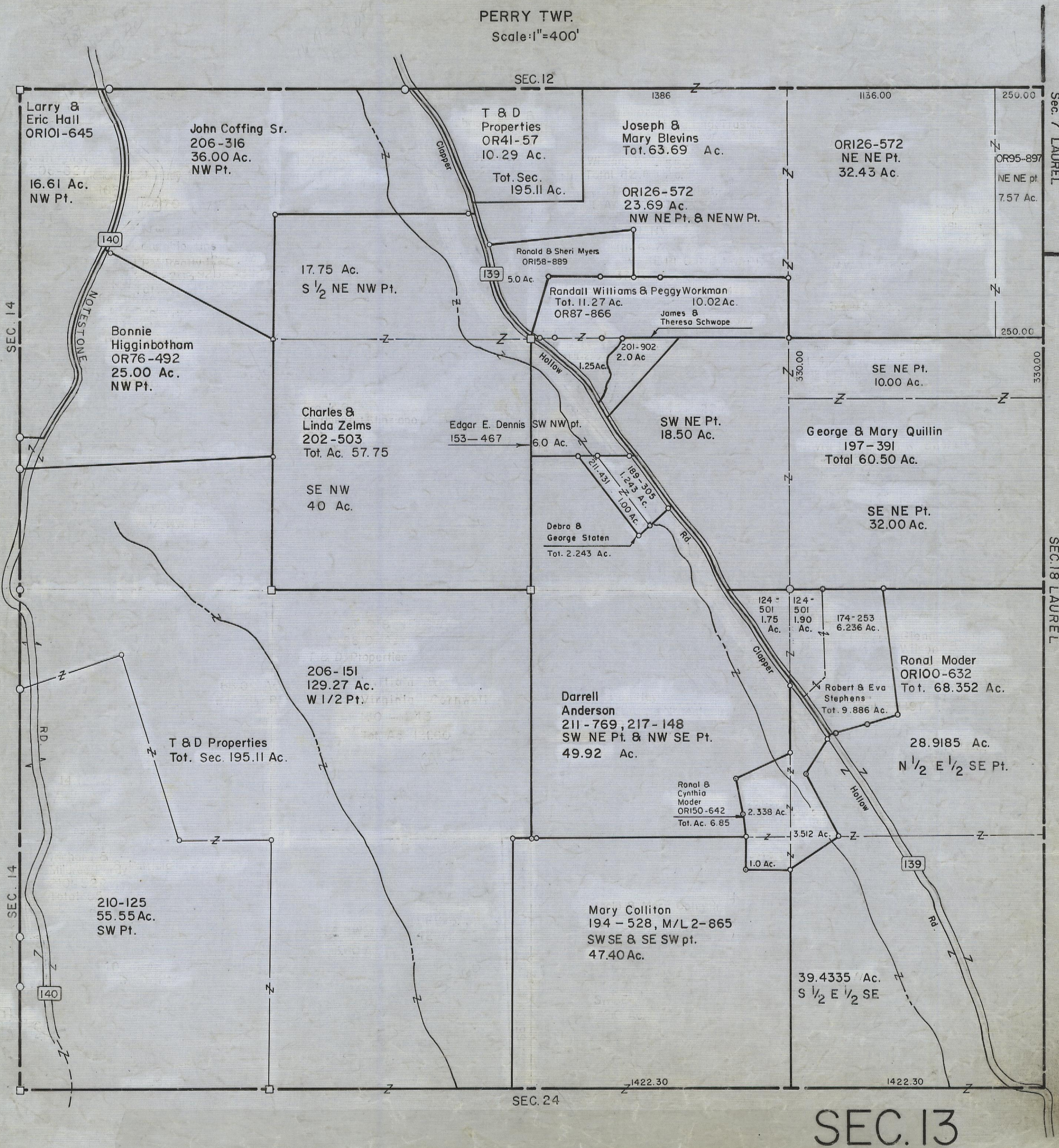
5-12-00

HOCKING COUNTY

Sec. 13 T12 R19

PERRY TWP.

Scale: 1"=400'



Larry & Eric Hall
OR101-645
16.61 Ac.
NW Pt.

John Coffing Sr.
206-316
36.00 Ac.
NW Pt.

T & D
Properties
OR41-57
10.29 Ac.
Tot. Sec.
195.11 Ac.

Joseph &
Mary Blevins
Tot. 63.69 Ac.

OR126-572
NE NE Pt.
32.43 Ac.

OR126-572
23.69 Ac.
NW NE Pt. & NENW Pt.

Ronald & Sheri Myers
OR158-889
5.0 Ac.

17.75 Ac.
S 1/2 NE NW Pt.

Randall Williams & Peggy Workman
Tot. 11.27 Ac. 10.02 Ac.
OR87-866

James &
Theresa Schwope

Bonnie
Higginbotham
OR76-492
25.00 Ac.
NW Pt.

Edgar E. Dennis
153-467
6.0 Ac.

SW NE Pt.
18.50 Ac.

George & Mary Quillin
197-391
Total 60.50 Ac.

Charles &
Linda Zelms
202-503
Tot. Ac. 57.75

SE NW
40 Ac.

Debra &
George Staten
Tot. 2.243 Ac.

SE NE Pt.
32.00 Ac.

206-151
129.27 Ac.
W 1/2 Pt.

Darrell
Anderson
211-769, 217-148
SW NE Pt. & NW SE Pt.
49.92 Ac.

Ronal Moder
OR100-632
Tot. 68.352 Ac.

T & D Properties
Tot. Sec. 195.11 Ac.

Robert & Eva
Stephens
Tot. 9.886 Ac.

28.9185 Ac.
N 1/2 E 1/2 SE Pt.

210-125
55.55 Ac.
SW Pt.

Ronal &
Cynthia
Moder
OR150-642
Tot. Ac. 6.85

Mary Colliton
194-528, M/L 2-865
SW SE & SE SW pt.
47.40 Ac.

39.4335 Ac.
S 1/2 E 1/2 SE

SEC. 13