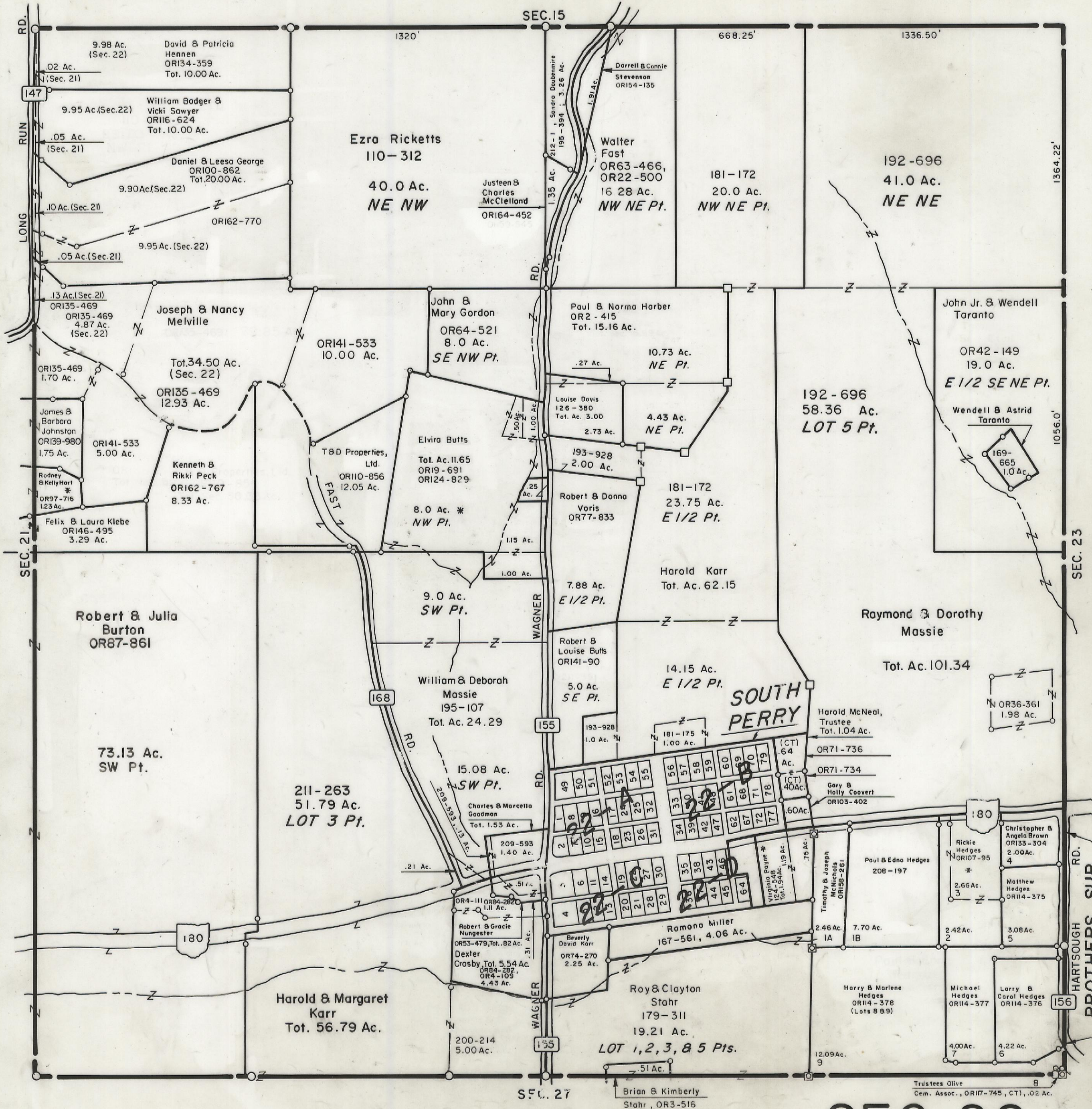


HOCKING COUNTY

PERRY TWP.

SEC. 22 T 12 R 19

Scale 1" = 400'



SEC. 22

BROTHERS SUB.
 -Plat 1-9 Incl.
 -Plat Cab. 2 Pg. 24
 -Plat Cab. 2 Pg. 40

Trustees Olive
 Cem. Assoc., ORI7-745, CT1, .02 Ac.