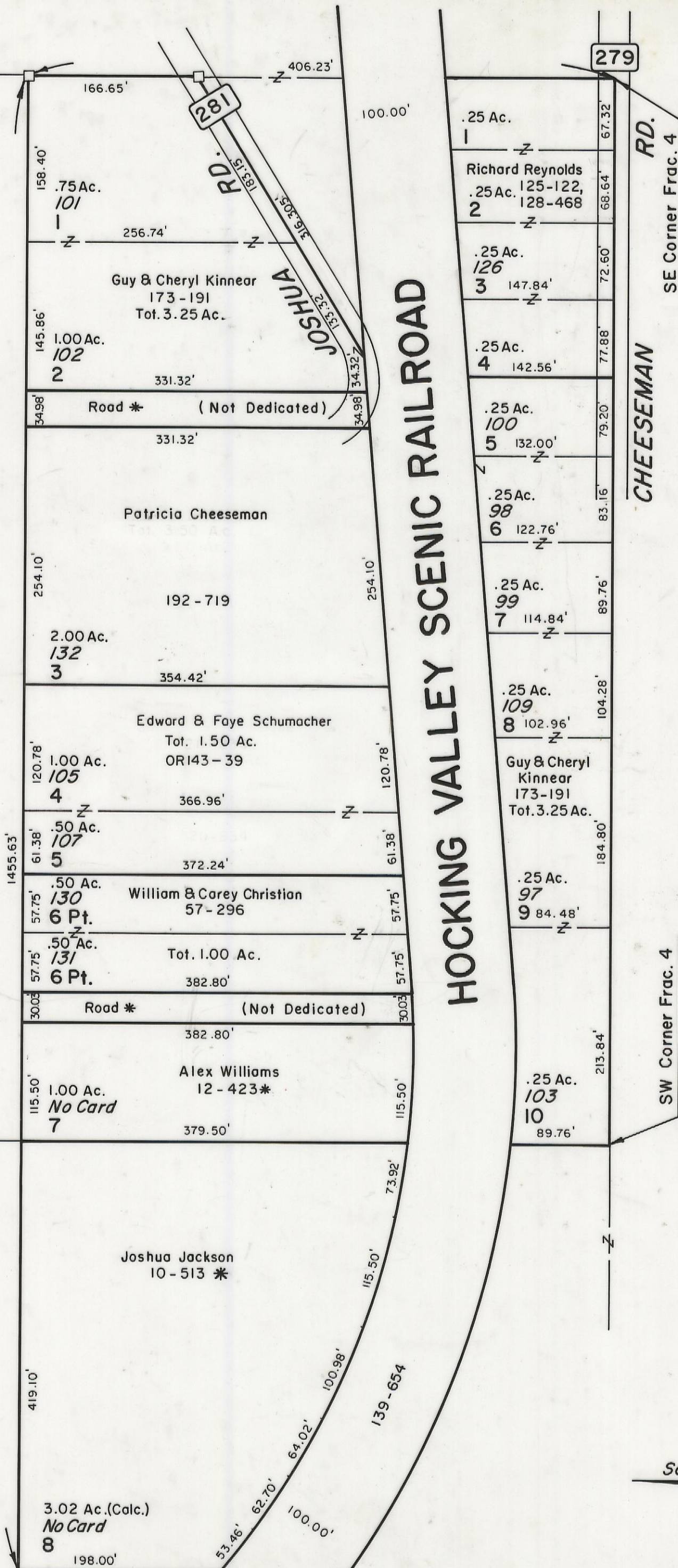


Frac. 3
Frac. 4

Frac. 4
Frac. 5



HOCKING COUNTY
WARD TWP.
SEC. 14 T 13 R 15
Scale 1" = 100'

NOTE :-North Of Railroad Is Recorded Sub. Of Frac. 4.
-South Of Railroad Is Not Recorded, Lot Numbers &
Dimensions Are Questionable.

Scale 1"=100'
NORTH