

HOCKING COUNTY

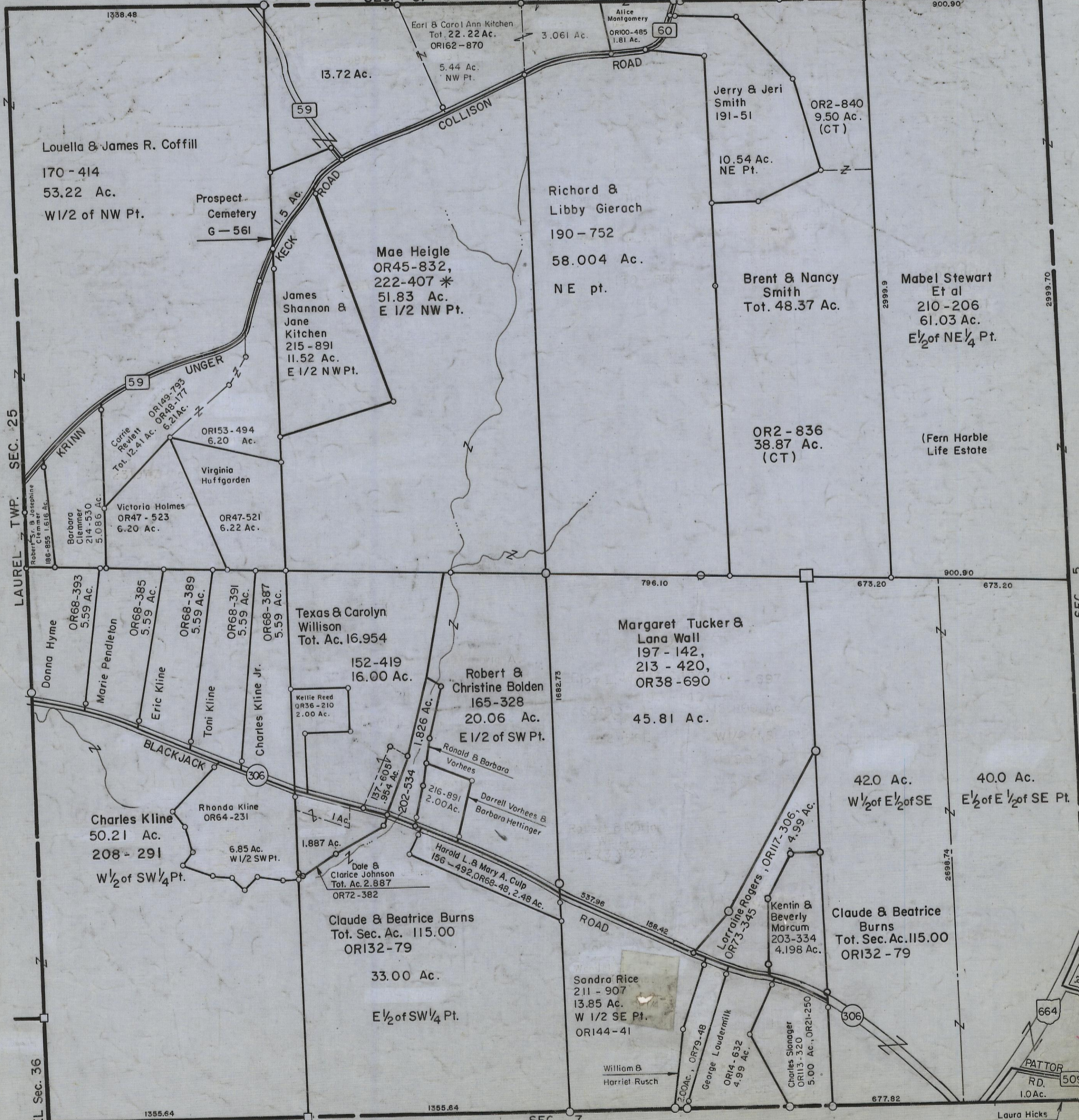
Sec. 6 T13 R17
WASHINGTON TWP.

Scale 1"=400'

FALLS TWP.

SEC. 31

900.90'



4-9-00

Louella & James R. Coffill
170 - 414
53.22 Ac.
W 1/2 of NW Pt.

Earl & Carol Ann Kitchen
Tot. 22.22 Ac.
OR162-870
5.44 Ac.
NW Pt.

Alice Montgomery
OR100-485
1.81 Ac.

Jerry & Jeri Smith
191-51
OR2-840
9.50 Ac.
(CT)

Richard & Libby Gierach
190 - 752
58.004 Ac.
NE pt.

Brent & Nancy Smith
Tot. 48.37 Ac.

Mabel Stewart
Et al
210-206
61.03 Ac.
E 1/2 of NE 1/4 Pt.

OR2 - 836
38.87 Ac.
(CT)

(Fern Horble
Life Estate

Prospect
Cemetery
G - 561

Mae Heigle
OR45-832,
222-407 *
51.83 Ac.
E 1/2 NW Pt.

James
Shannon &
Jane
Kitchen
215 - 891
11.52 Ac.
E 1/2 NW Pt.

Carrie
Revelt
Tot. 12.41 Ac.
OR149-795
OR48-177
6.21 Ac.

OR153-494
6.20 Ac.
Virginia
Huffgarden

Victoria Holmes
OR47 - 523
6.20 Ac.

OR47-521
6.22 Ac.

Barbara
Clemmer
214 - 530
5.086 Ac.

Robert Sr. & Josephine
Clemmer
186-955 1.616 Ac.

Donna Hyme
OR68-393
5.59 Ac.

Marie Pendleton
OR68-385
5.59 Ac.

Eric Kline
OR68-389
5.59 Ac.

Toni Kline
OR68-391
5.59 Ac.

Charles Kline Jr.
OR68-387
5.59 Ac.

Texas & Carolyn
Willison
Tot. Ac. 16.954

152-419
16.00 Ac.

Robert &
Christine Bolden
165-328
20.06 Ac.
E 1/2 of SW Pt.

Margaret Tucker &
Lana Wall
197 - 142,
213 - 420,
OR38 - 690
45.81 Ac.

Charles Kline
50.21 Ac.
208 - 291
W 1/2 of SW 1/4 Pt.

Rhonda Kline
OR64-231
6.85 Ac.
W 1/2 SW Pt.

Kellie Reed
OR36 - 210
2.00 Ac.

Ronald & Barbara
Vorhees
216-891
2.00 Ac.

Darrell Vorhees &
Barbara Hettinger

Dale &
Clarice Johnson
Tot. Ac. 2.887
OR72 - 382

Claude & Beatrice Burns
Tot. Sec. Ac. 115.00
OR132-79
33.00 Ac.
E 1/2 of SW 1/4 Pt.

Harold L. & Mary A. Culp
156 - 492, OR68-48, 2.48 Ac.

Sandra Rice
211 - 907
13.85 Ac.
W 1/2 SE Pt.
OR144-41

Lorraine Rogers, OR117-306,
OR73-345
4.99 Ac.

Kentin &
Beverly
Marcum
203-334
4.198 Ac.

Claude & Beatrice
Burns
Tot. Sec. Ac. 115.00
OR132 - 79

William &
Harriet Rusch

George
Loudermilk
OR14-632
4.99 Ac.

Charles Slonager
OR113-320
5.00 Ac., OR21-250

Laura Hicks
61-71

Larry Liff
OR77-649 *
(See Deed Folder)

SEC. 6

SEC. 7

SEC. 5

LAUREL TWP. SEC. 25

LAUREL Sec. 36

1338.48

1355.64

1355.84

796.10

673.20

900.90

673.20

1682.73

2998.74

677.82

2999.70

2999.70

664

PATTOR RD. 1.0 Ac.

509

171