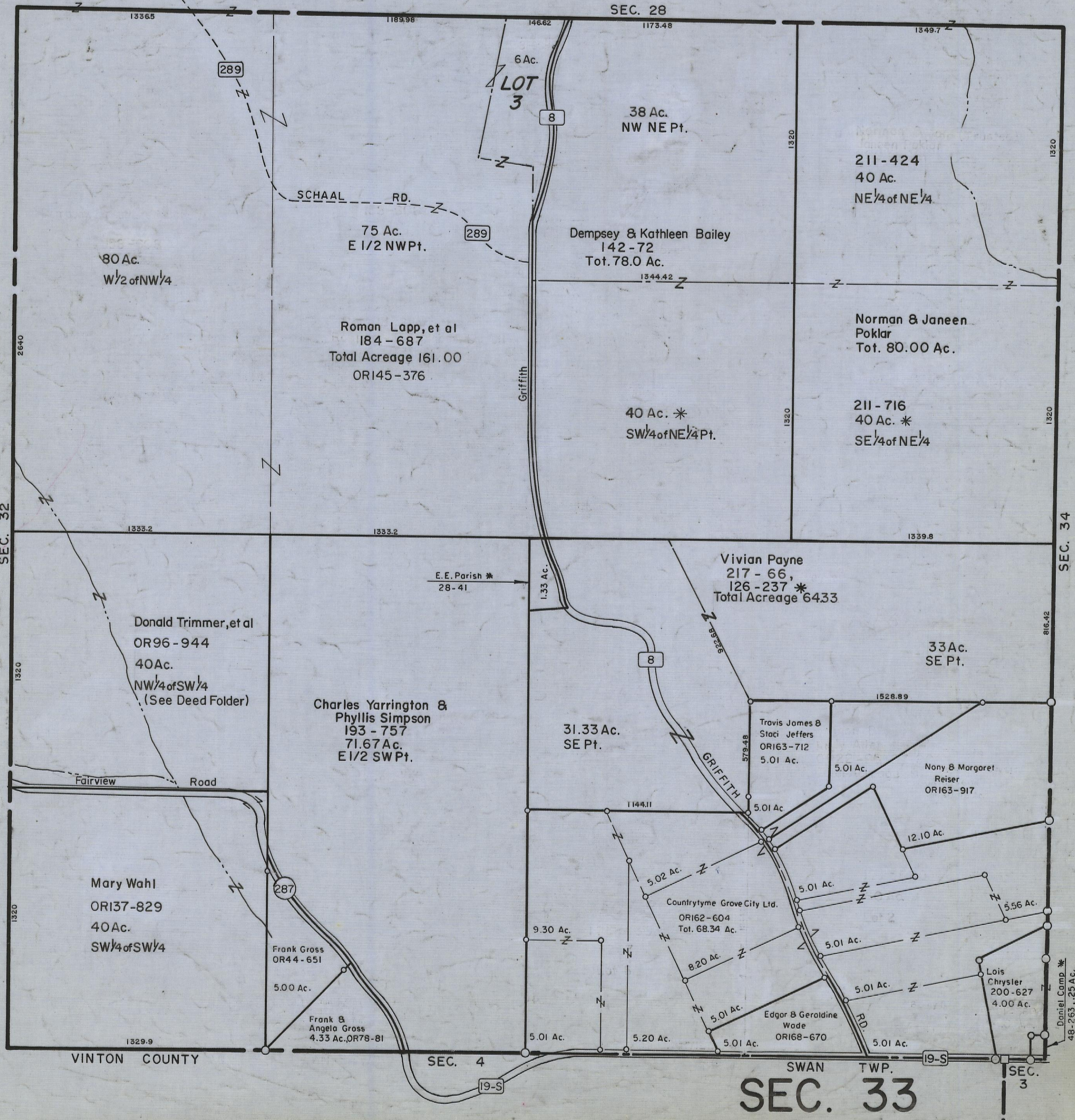


4-5-00

HOCKING COUNTY

Sec. 33 T 13 R 17
WASHINGTON TWP.
Scale 1"=400'



80 Ac.
W 1/2 of NW 1/4

6 Ac.
LOT 3

38 Ac.
NW NE Pt.

211-424
40 Ac.
NE 1/4 of NE 1/4

75 Ac.
E 1/2 NW Pt.

Dempsey & Kathleen Bailey
142-72
Tot. 78.0 Ac.

Norman & Janeen
Poklar
Tot. 80.00 Ac.

Roman Lapp, et al
184-687
Total Acreage 161.00
ORI45-376

40 Ac. *
SW 1/4 of NE 1/4 Pt.

211-716
40 Ac. *
SE 1/4 of NE 1/4

Donald Trimmer, et al
OR96-944
40 Ac.
NW 1/4 of SW 1/4
(See Deed Folder)

Charles Yarrington &
Phyllis Simpson
193-757
71.67 Ac.
E 1/2 SW Pt.

Vivian Payne
217-66,
126-237 *
Total Acreage 64.33

33 Ac.
SE Pt.

Mary Wahl
ORI37-829
40 Ac.
SW 1/4 of SW 1/4

Frank Gross
OR44-651
5.00 Ac.

Frank &
Angela Gross
4.33 Ac. ORI78-81

31.33 Ac.
SE Pt.

Travis James &
Staci Jeffers
ORI63-712
5.01 Ac.

Nony & Margaret
Reiser
ORI63-917

Countrytyme Grove City Ltd.
ORI62-604
Tot. 68.34 Ac.

Lois
Chrysler
200-627
4.00 Ac.

Edgar & Geraldine
Wade
ORI68-670

Daniel Camp *
48-263, 1.25 Ac.

VINTON COUNTY

SEC. 4

SWAN TWP.

SEC. 33

SEC. 3