

Rempel Partners, LLC
Tot. 13.90 Ac.
060004330000

OR345-87
Frac. 10 Pt.
060004330000

205-539
.23 Ac.

Gene & Mary Jones
185-364
2.54 Ac.
060004320000
Tot. 2.77 Ac.

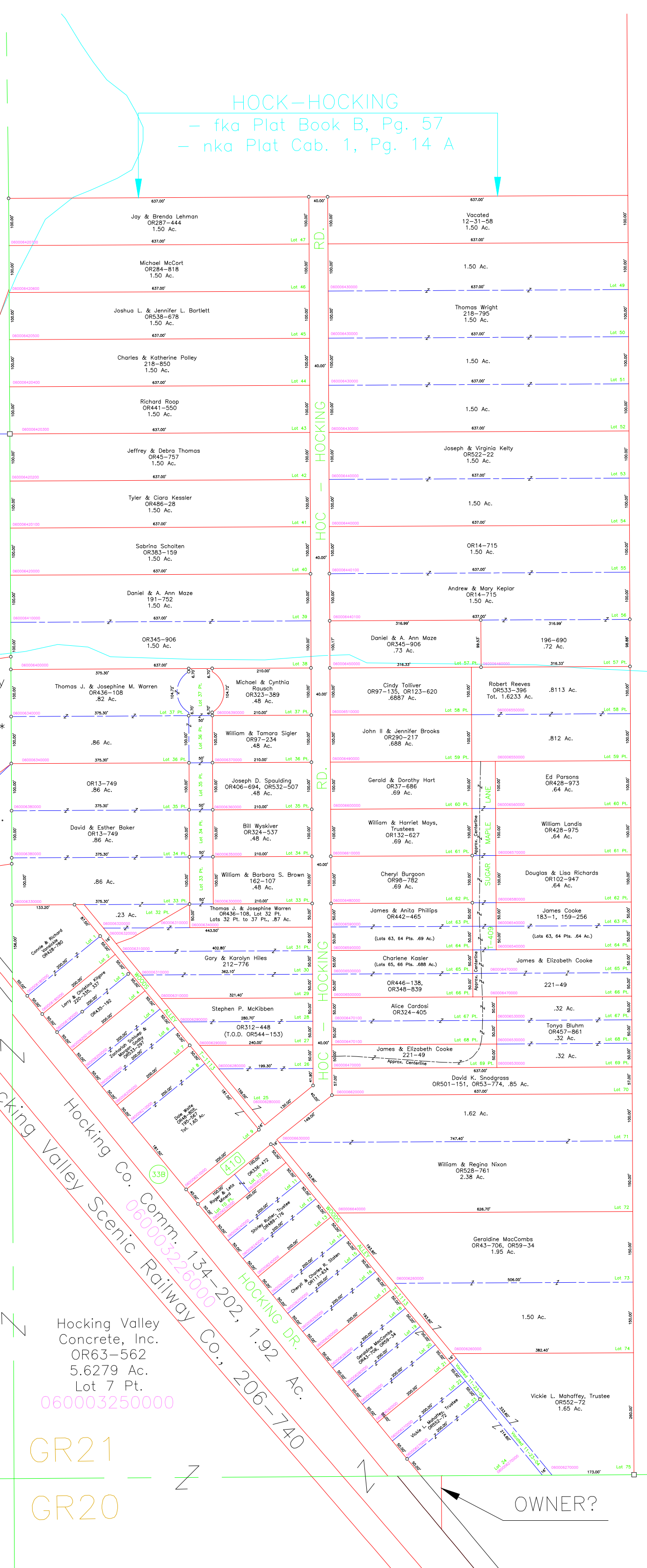
Vinton County Housing Corporation
OR427-264 *
(SEE DEED)
2.22 Ac.
060004300100

Sean & Lisa Champ
OR293-217
Tot. .79 Ac.
060004310100

Jacqueline & Robin Perry
OR469-511
060004300200

OR63-562
27.6155 Ac.
Frac.s 7, 11 Pt.
060004290000

Hocking Valley Concrete, Inc.
OR63-562
5.6279 Ac.
Lot 7 Pt.
060003250000



HOCK-HOCKING
- fka Plat Book B, Pg. 57
- nka Plat Cab. 1, Pg. 14 A

Hocking Valley Scenic Railway Co. Comm. Road
134-202, 1.92 Ac.
060003280000

GR27 GR21
GR26 GR20

Kilbarger Solid Waste Service
OR313-990, 993
290.89 Ac.
Frac. 2 Pt.
060003230000

T13N R16W
T13N R16W

OWNER?