

SE Pt.

DEIBLE IN THE ROAD EASEMENTS, LLC
Tot. 70.9343 Ac.

OF 1
06000

William & Kelly
Lemon
OR434-196
36.00 Ac.
060002660000

OR539-991
5.0587 Ac.
060001370100

360

DEIBLE

Donav
OR24
42.5
Frac.
06000

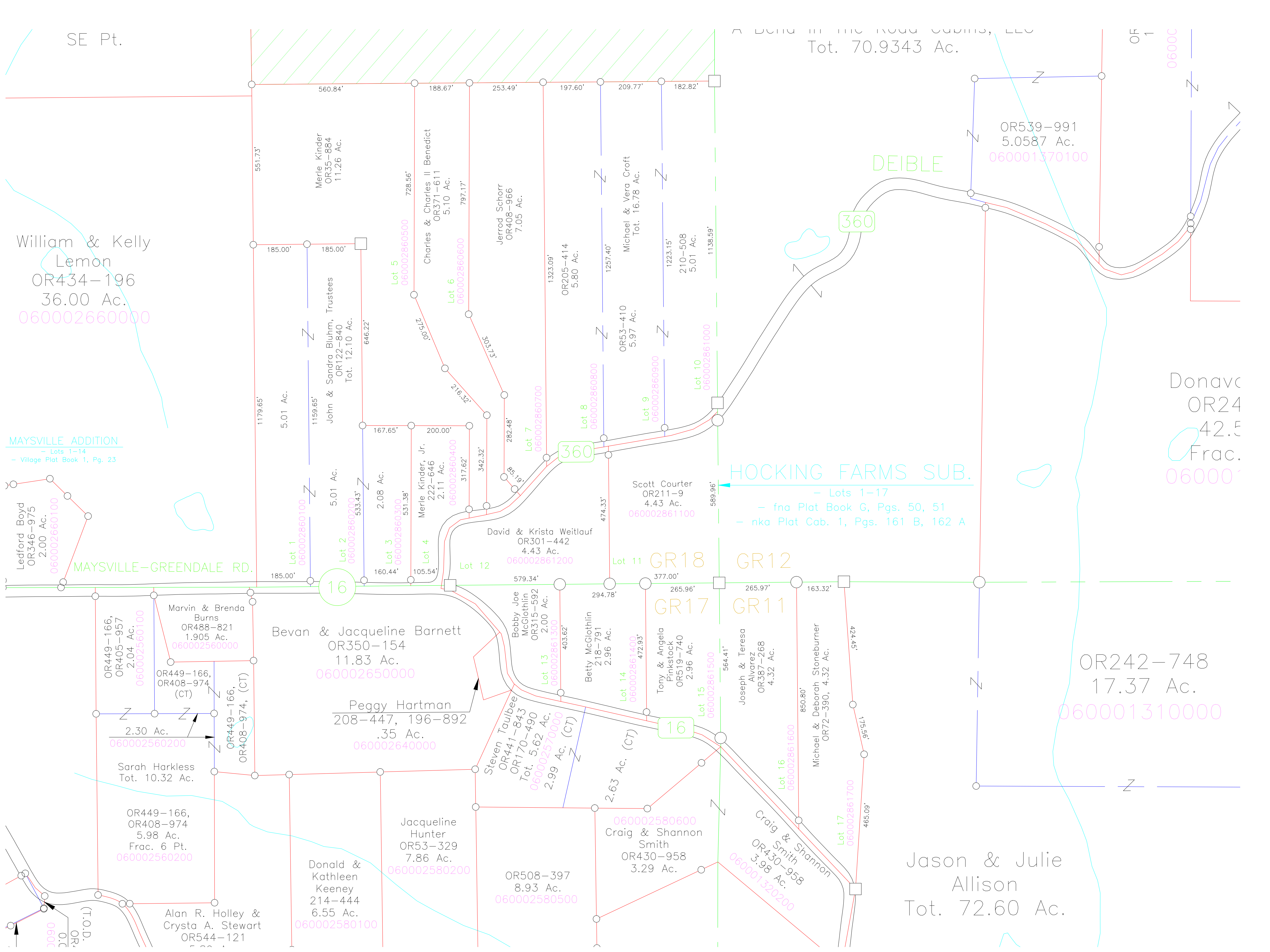
MAYSVILLE ADDITION
- Lots 1-14
- Village Plat Book 1, Pg. 23

HOCKING FARMS SUB.

- Lots 1-17
- fna Plat Book G, Pgs. 50, 51
- nka Plat Cab. 1, Pgs. 161 B, 162 A

OR242-748
17.37 Ac.
060001310000

Jason & Julie
Allison
Tot. 72.60 Ac.



Ledford Boyd
OR346-975
2.00 Ac.
060002660100

MAYSVILLE-GREENDALE RD.

OR449-166, OR405-957
2.04 Ac.
060002560100

Marvin & Brenda Burns
OR488-821
1.905 Ac.
060002560000

OR449-166, OR408-974 (CT)

2.30 Ac.
060002560200

Sarah Harkless
Tot. 10.32 Ac.

OR449-166, OR408-974
5.98 Ac.
Frac. 6 Pt.
060002560200

Alan R. Holley & Crysta A. Stewart
OR544-121

Bevan & Jacqueline Barnett
OR350-154
11.83 Ac.
060002650000

Peggy Hartman
208-447, 196-892
.35 Ac.
060002640000

Jacqueline Hunter
OR53-329
7.86 Ac.
060002580200

Donald & Kathleen Keeney
214-444
6.55 Ac.
060002580100

Bobby Joe McGlothlin
OR315-592
2.00 Ac.
060002861300

Steven Taulbee
OR441-843
OR170-490
Tot. 5.62 Ac.
060002570000

OR508-397
8.93 Ac.
060002580500

Betty McGlothlin
218-791
2.96 Ac.
060002861400

Tony & Angela Pinkstock
OR519-740
2.96 Ac.
060002861500

Craig & Shannon Smith
OR430-958
3.29 Ac.
060002580600

060002580600
Craig & Shannon Smith
OR430-958
3.29 Ac.
060001320200

Scott Courter
OR211-9
4.43 Ac.
060002861100

GR18 GR12
GR17 GR11

Joseph & Teresa Alvarez
OR387-268
4.32 Ac.

Michael & Deborah Stoneburner
OR72-390, 4.32 Ac.

Craig & Shannon Smith
OR430-958
3.98 Ac.

060002861700