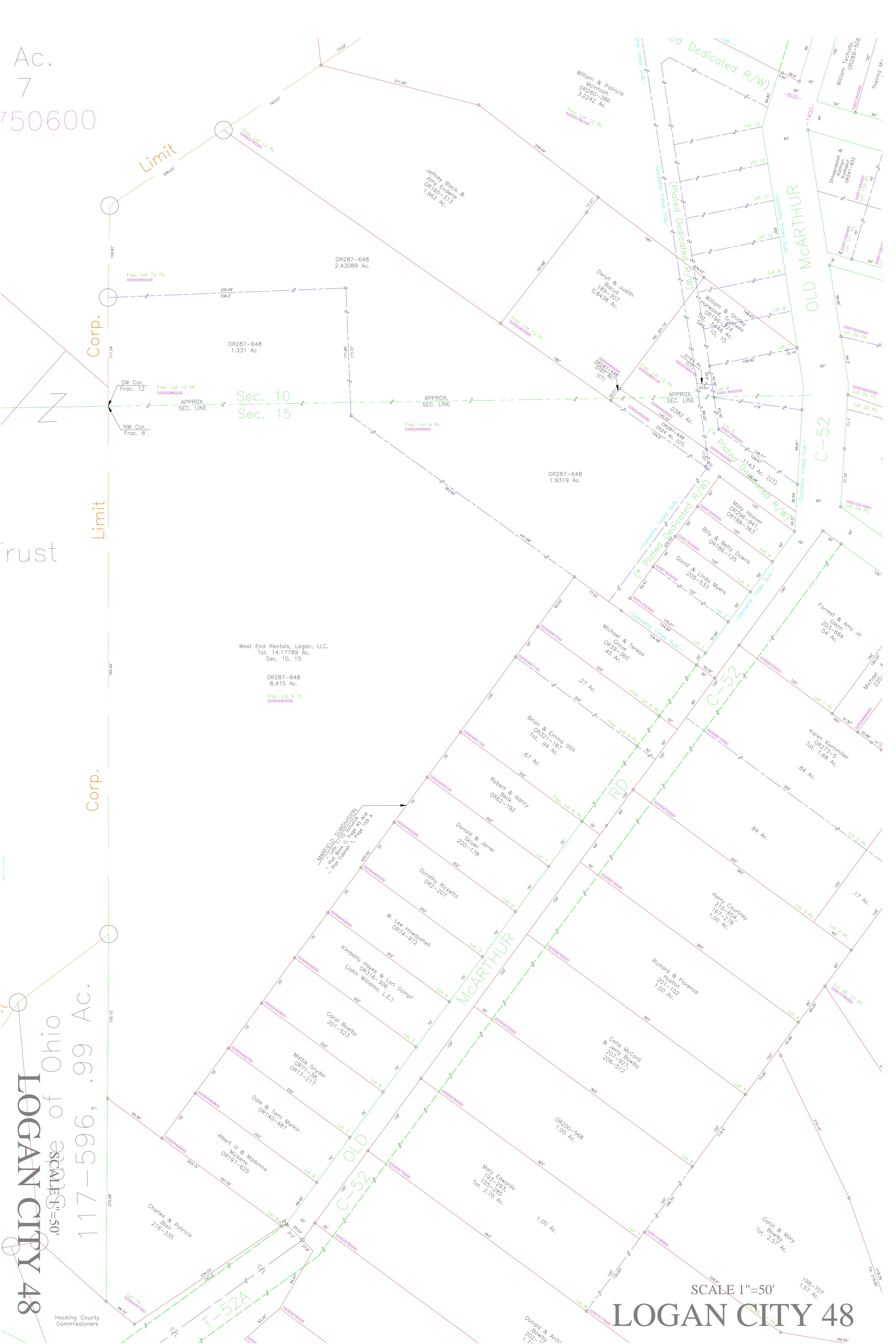


Ac.
7
750600

LOGAN CITY 48
117-596, .99 Ac.
SCALE 1"=50'



Limit

Corp.

Limit

Corp.

Sec. 10
Sec. 15

West End Rentals, Logan, LLC.
Tot. 14.17789 Ac.
Sec. 10, 15

OR287-648
8.415 Ac.
Frac. Lot 6 Pt.
020004400000

MARSHFIELD SUBDIVISION
Plat Book 9, Page 158 A
Plat Constraint 1, Page 158 A

SCALE 1"=50'
LOGAN CITY 48

Hocking County Commissioners