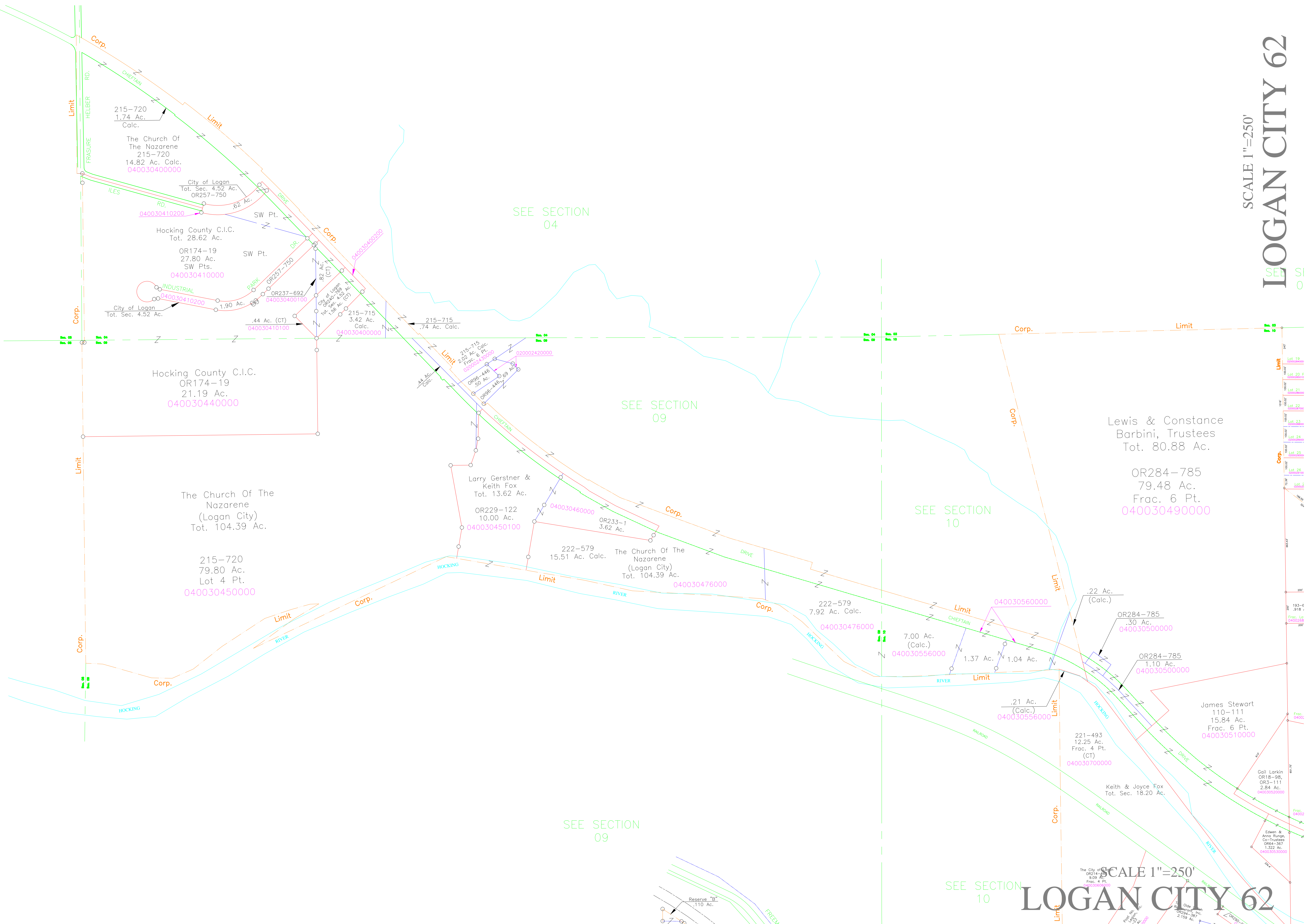


SCALE 1"=250'  
**LOGAN CITY 62**



215-720  
1.74 Ac.  
Calc.  
The Church Of  
The Nazarene  
215-720  
14.82 Ac. Calc.  
040030400000

City of Logan  
Tot. Sec. 4.52 Ac.  
OR257-750  
62 Ac.  
040030410200

Hocking County C.I.C.  
Tot. 28.62 Ac.  
OR174-19  
27.80 Ac.  
SW Pts.  
040030410000

INDUSTRIAL  
040030410200  
City of Logan  
Tot. Sec. 4.52 Ac.

044 Ac. (CT)  
040030410100

Hocking County C.I.C.  
OR174-19  
21.19 Ac.  
040030440000

The Church Of The  
Nazarene  
(Logan City)  
Tot. 104.39 Ac.

215-720  
79.80 Ac.  
Lot 4 Pt.  
040030450000

Larry Gerstner &  
Keith Fox  
Tot. 13.62 Ac.  
OR229-122  
10.00 Ac.  
040030450100

222-579  
15.51 Ac. Calc.  
The Church Of The  
Nazarene  
(Logan City)  
Tot. 104.39 Ac.  
040030476000

222-579  
7.92 Ac. Calc.  
040030476000

7.00 Ac.  
(Calc.)  
040030556000

.21 Ac.  
(Calc.)  
040030556000

.22 Ac.  
(Calc.)  
OR284-785  
.30 Ac.  
040030500000

OR284-785  
1.10 Ac.  
040030500000

James Stewart  
110-111  
15.84 Ac.  
Frac. 6 Pt.  
040030510000

221-493  
12.25 Ac.  
Frac. 4 Pt.  
(CT)  
040030700000

Keith & Joyce Fox  
Tot. Sec. 18.20 Ac.

Gail Larkin  
OR18-98,  
OR3-111  
2.84 Ac.  
040030520000

Edwen &  
Anna Runge  
OR64-367  
1.322 Ac.  
040030530000

SCALE 1"=250'  
**LOGAN CITY 62**

SEE SECTION  
04

SEE SECTION  
09

SEE SECTION  
10

SEE SECTION  
09

SEE SECTION  
10

SEE SI  
O