

PE03 PE02  
PE10 PE11

HIDDEN LAKES ASSOCIATION

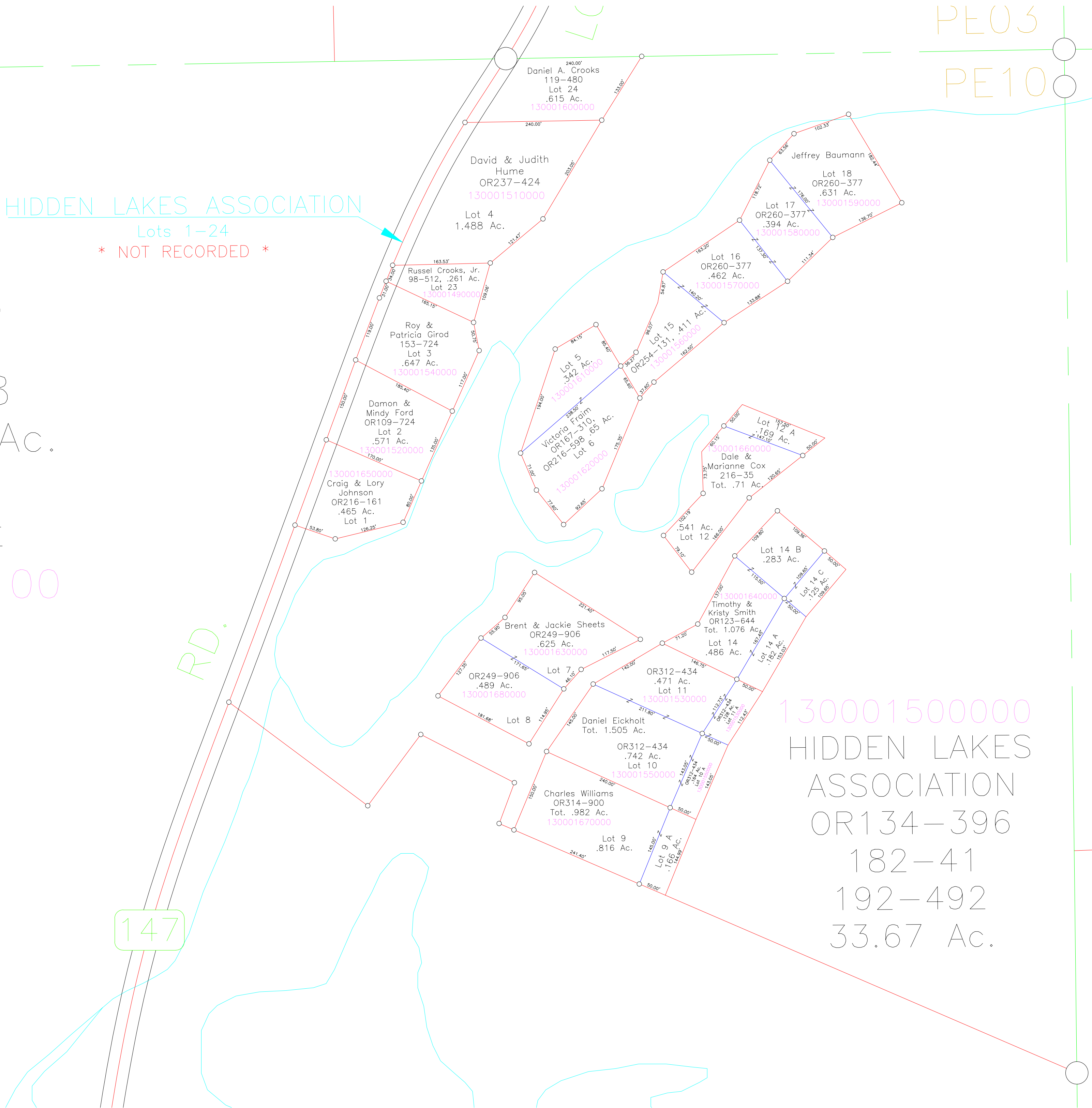
Lots 1-24  
\* NOT RECORDED \*

Earl Metz,  
Trustee  
OR98-348  
Tot. 74.47 Ac.  
NE Pt.,  
NW SE Pt  
30001450100

NW SE Pt.

147

RD.



130001500000  
HIDDEN LAKES  
ASSOCIATION  
OR134-396  
182-41  
192-492  
33.67 Ac.

Rc  
1.