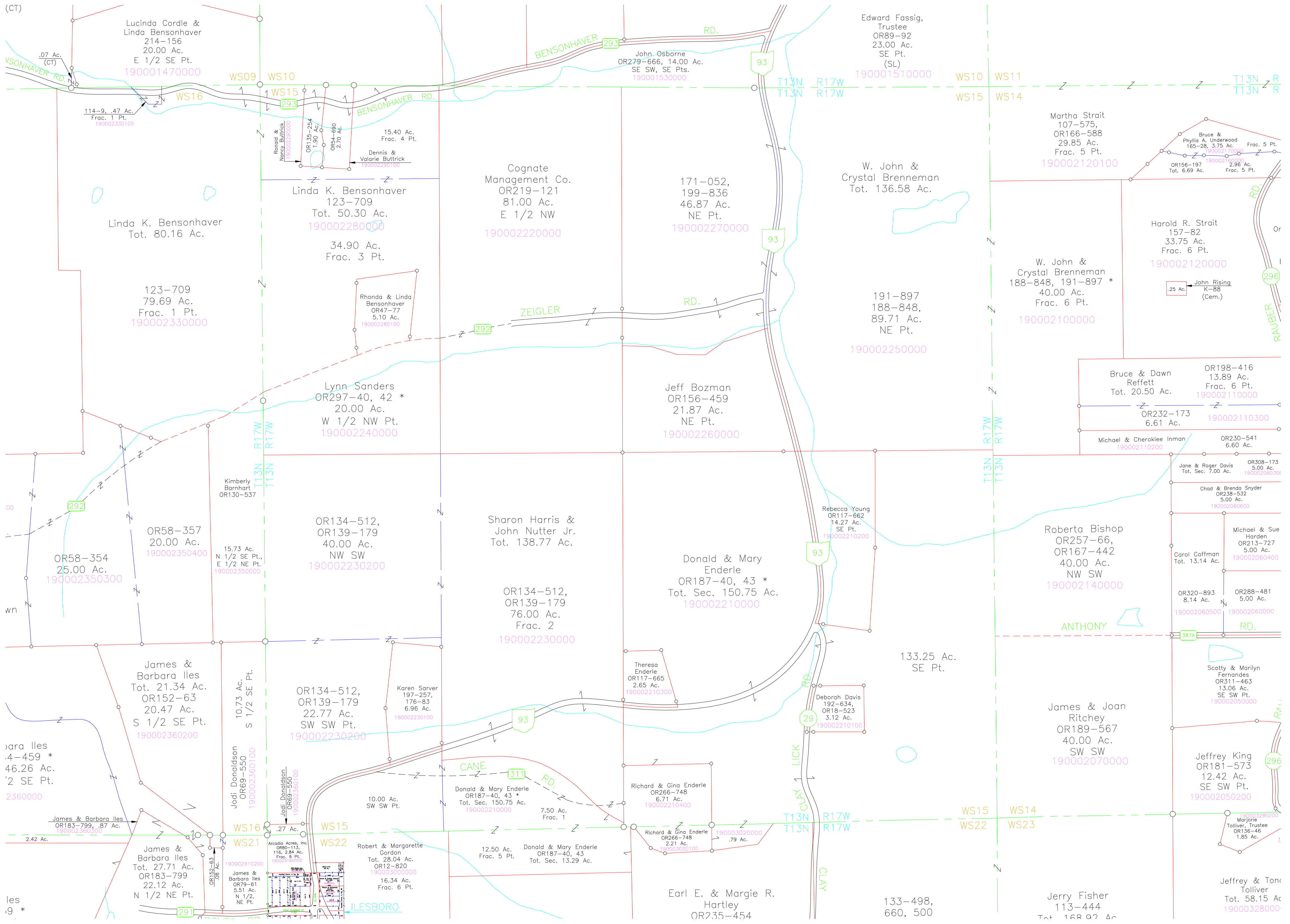


(CT)



Lucinda Cordle & Linda Bensonhaver
214-156
20.00 Ac.
E 1/2 SE Pt.
190001470000

John Osborne
OR279-666, 14.00 Ac.
SE SW, SE Pts.
190001530000

Edward Fassig,
Trustee
OR89-92
23.00 Ac.
SE Pt.
(SL)
190001510000

Martha Strait
107-575,
OR166-588
29.85 Ac.
Frac. 5 Pt.
190002120100

Linda K. Bensonhaver
Tot. 80.16 Ac.

Linda K. Bensonhaver
123-709
Tot. 50.30 Ac.
190002280000

Cognate Management Co.
OR219-121
81.00 Ac.
E 1/2 NW
190002220000

171-052,
199-836
46.87 Ac.
NE Pt.
190002270000

W. John & Crystal Brenneman
Tot. 136.58 Ac.

W. John & Crystal Brenneman
188-848, 191-897 *
40.00 Ac.
Frac. 6 Pt.
190002100000

Harold R. Strait
157-82
33.75 Ac.
Frac. 6 Pt.
190002120000

123-709
79.69 Ac.
Frac. 1 Pt.
190002330000

Rhonda & Linda Bensonhaver
OR47-77
5.10 Ac.
190002280100

191-897
188-848,
89.71 Ac.
NE Pt.
190002250000

Lynn Sanders
OR297-40, 42 *
20.00 Ac.
W 1/2 NW Pt.
190002240000

Jeff Bozman
OR156-459
21.87 Ac.
NE Pt.
190002260000

Bruce & Dawn Reffett
Tot. 20.50 Ac.
OR198-416
13.89 Ac.
Frac. 6 Pt.
190002110000

OR232-173
6.61 Ac.
190002110300

Kimberly Barnhart
OR130-537

OR58-357
20.00 Ac.
190002350400

OR134-512,
OR139-179
40.00 Ac.
NW SW
190002230200

Sharon Harris & John Nutter Jr.
Tot. 138.77 Ac.

Donald & Mary Enderle
OR187-40, 43 *
Tot. Sec. 150.75 Ac.
190002210000

Rebecca Young
OR117-662
14.27 Ac.
SE Pt.
190002210200

Roberta Bishop
OR257-66,
OR167-442
40.00 Ac.
NW SW
190002140000

Jane & Roger Davis
Tot. Sec. 7.00 Ac.
OR308-173
5.00 Ac.
190002060300

Chad & Brenda Snyder
OR238-532
5.00 Ac.
190002060600

Michael & Sue Harden
OR213-727
5.00 Ac.
190002060400

Carol Coffman
Tot. 13.14 Ac.

OR320-893
8.14 Ac.
190002060500

OR288-481
5.00 Ac.
190002060000

OR134-512,
OR139-179
76.00 Ac.
Frac. 2
190002230000

133.25 Ac.
SE Pt.

Theresa Enderle
OR117-665
2.65 Ac.
190002210300

OR134-512,
OR139-179
22.77 Ac.
SW SW Pt.
190002230200

Karen Sarver
197-257,
176-83
6.96 Ac.
190002230100

Deborah Davis
192-634,
OR18-523
3.12 Ac.
190002210100

James & Joan Ritchey
OR189-567
40.00 Ac.
SW SW
190002070000

Scotty & Marilyn Fernandes
OR311-463
13.06 Ac.
SE SW Pt.
190002050000

Jeffrey King
OR181-573
12.42 Ac.
SE SW Pt.
190002050200

James & Barbara Iles
OR183-799, .87 Ac.
190002360300

Jodi Donaldson
OR69-550
10.73 Ac.
S 1/2 SE Pt.
190002360100

Jodi Donaldson
OR69-550
10.73 Ac.
S 1/2 SE Pt.
190002360100

Robert & Margarette Gordon
Tot. 28.04 Ac.
OR12-820
190002160000

Donald & Mary Enderle
OR187-40, 43 *
Tot. Sec. 150.75 Ac.
190002210000

Richard & Gina Enderle
OR266-748
6.71 Ac.
190002210400

Richard & Gina Enderle
OR266-748
2.21 Ac.
190003020100

Marjorie Tolliver, Trustee
OR136-46
1.85 Ac.
190003280200

James & Barbara Iles
Tot. 27.71 Ac.
OR183-799
22.12 Ac.
N 1/2 NE Pt.

James & Barbara Iles
OR79-61
5.51 Ac.
N 1/2, NE Pt.

12.50 Ac.
Frac. 5 Pt.
Donald & Mary Enderle
OR187-40, 43
Tot. Sec. 13.29 Ac.

Earl E. & Margie R. Hartley
OR235-454

133-498,
660, 500

Jerry Fisher
113-444
Tot. 168.92 Ac.

Jeffrey & Tony Tolliver
Tot. 58.15 Ac.
190003280000