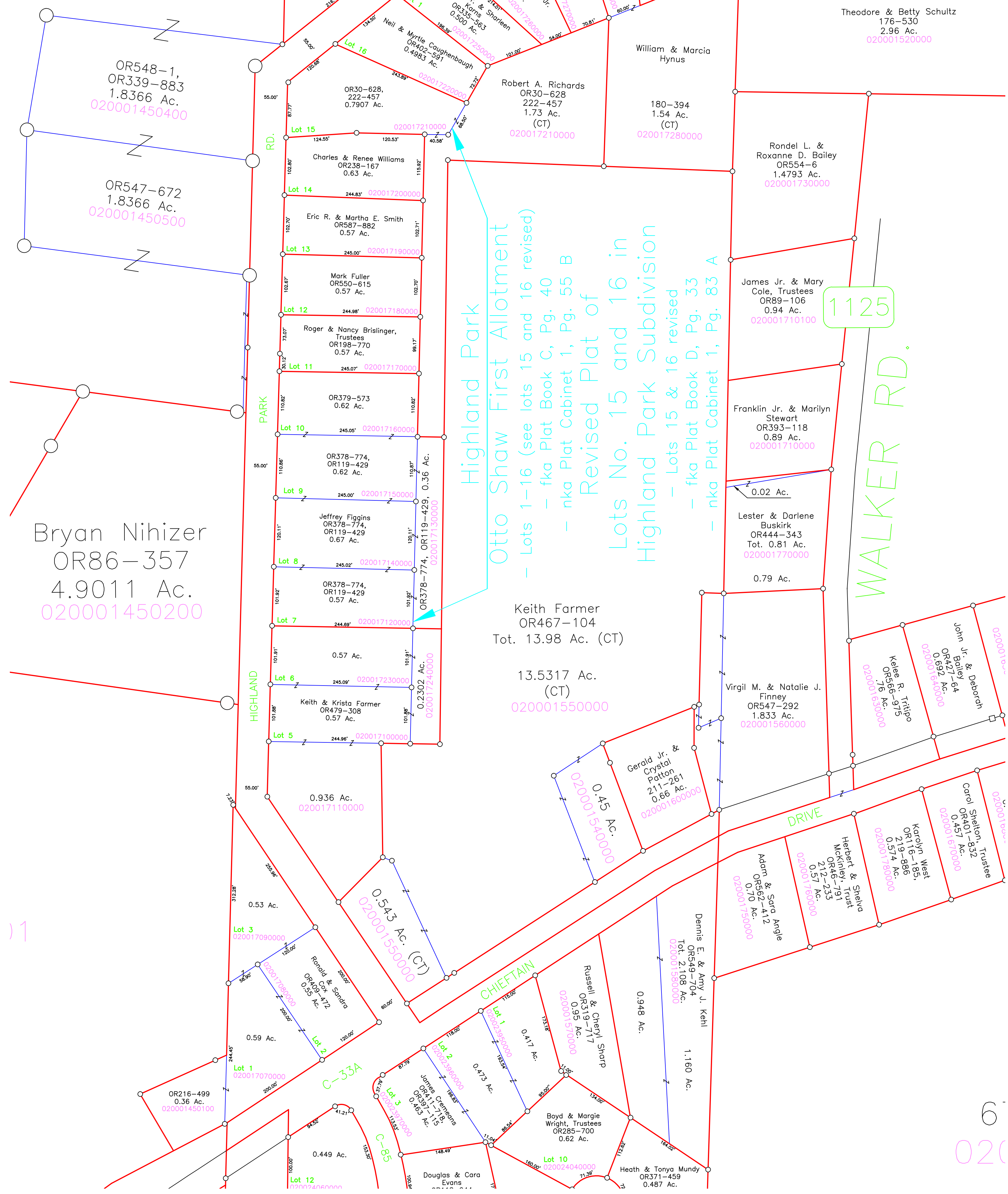


ed Plat of
12 and 13 in
Park Subdivision
ed Lots 12 & 13
at Book F, Pg. 22
Cabinet 1, Pg. 124 B



OR548-1,
OR339-883
1.8366 Ac.
020001450400

OR547-672
1.8366 Ac.
020001450500

Bryan Nihizer
OR86-357
4.9011 Ac.
020001450200

Highland Park
Otto Shaw First Allotment
- Lots 1-16 (see lots 15 and 16 revised)
- fka Plat Book C, Pg. 40
- nka Plat Cabinet 1, Pg. 55 B
Revised Plat of
Lots No. 15 and 16 in
Highland Park Subdivision
- Lots 15 & 16 revised
- fka Plat Book D, Pg. 33
- nka Plat Cabinet 1, Pg. 83 A

Keith Farmer
OR467-104
Tot. 13.98 Ac. (CT)
13.5317 Ac.
(CT)
020001550000

1125

WALKER RD.

DRIVE

CHIEFTAIN

C-33A

C-85

Karl Hsieh
OR324-411
0.9945 Ac.

Theodore & Betty Schultz
134-743
0.7131 Ac.

Theodore & Betty Schultz
176-530
2.96 Ac.
020001520000

James Jr. & Mary
Cole, Trustees
OR89-106
0.94 Ac.
020001710100

Franklin Jr. & Marilyn
Stewart
OR393-118
0.89 Ac.
020001710000

Lester & Darlene
Buskirk
OR444-343
Tot. 0.81 Ac.
020001770000

Virgil M. & Natalie J.
Finney
OR547-292
1.833 Ac.
020001560000

John Jr. & Deborah
Boiley
OR427-64
0.692 Ac.
020001640000

Carol Shelton, Trustee
OR401-852
0.457 Ac.
020001670000

Karolyn West
OR116-185,
OR119-886,
OR119-886,
0.574 Ac.
020001780000

Herbert & Shelya
McKinley, Trust
OR46-793
212-233
0.57 Ac.
020001760000

Gerald Jr. &
Crystal
Patton
211-261
0.66 Ac.
020001600000

Dennis E. & Amy J. Kehl
OR549-704
Tot. 2.108 Ac.
020001580000

Russell & Cheryl Sharp
OR319-717
0.95 Ac.
020001570000

Boyd & Margie
Wright, Trustees
OR285-700
0.62 Ac.

Heath & Tonya Mundy
OR371-459
0.487 Ac.

0.125 Ac. (C1)
Kathryn Martin
OR478-481
Tot. 0.731 Ac.
0.606 Ac.

Mallory & Douglas
Cherryholmes
OR562-725
0.706 Ac.

Lot 13
020017360000

Lot 15
020017210000

Charles & Renee Williams
OR238-167
0.63 Ac.

Eric R. & Martha E. Smith
OR587-882
0.57 Ac.

Lot 12
020017180000

Roger & Nancy Brislinger,
Trustees
OR198-770
0.57 Ac.

Lot 10
020017160000

Jeffrey Figgins
OR378-774,
OR119-429
0.67 Ac.

Lot 8
020017140000

Lot 7
020017120000

Keith & Krista Farmer
OR479-308
0.57 Ac.

Lot 5
020017100000

0.936 Ac.
020017110000

Lot 3
020017090000

Ronald & Sandra
Cox
OR419-172
0.55 Ac.

Lot 2
020017070000

OR216-499
0.36 Ac.
020001450100

Lot 12
020017200000

0.502 Ac.
George Jr. & Sharleen
Korns
OR335-563
0.500 Ac.

Lot 1
020017250000

Neil & Myrtle Caughenbaugh
OR402-591
0.4983 Ac.

OR30-628,
222-457
0.7907 Ac.

Lot 14
020017200000

Lot 13
020017190000

Mark Fuller
OR550-615
0.57 Ac.

Lot 11
020017170000

OR379-573
0.62 Ac.

Lot 9
020017150000

OR378-774,
OR119-429
0.62 Ac.

Lot 6
020017230000

0.2302 Ac.
020017240000

0.57 Ac.

0.543 Ac. (CT)
020001550000

Lot 3
020017090000

0.59 Ac.

Lot 1
020017070000

James Centreans
OR411-115,
OR429-115
0.463 Ac.

Lot 12
020017200000

0.554 Ac.
Chad & Brenda Snyder
OR429-382
0.554 Ac.

Lot 4
020017200000

Jeffrey L. Wright, Jr.
OR334-892
0.502 Ac.

Robert A. Richards
OR30-628
222-457
1.73 Ac.
(CT)
020017210000

180-394
1.54 Ac.
(CT)
020017280000

William & Marcia
Hynus

Rondel L. &
Roxanne D. Bailey
OR554-6
1.4793 Ac.
020001730000

James Jr. & Mary
Cole, Trustees
OR89-106
0.94 Ac.
020001710100

Franklin Jr. & Marilyn
Stewart
OR393-118
0.89 Ac.
020001710000

Lester & Darlene
Buskirk
OR444-343
Tot. 0.81 Ac.
020001770000

0.79 Ac.

Virgil M. & Natalie J.
Finney
OR547-292
1.833 Ac.
020001560000

John Jr. & Deborah
Boiley
OR427-64
0.692 Ac.
020001640000

Carol Shelton, Trustee
OR401-852
0.457 Ac.
020001670000

Karolyn West
OR116-185,
OR119-886,
OR119-886,
0.574 Ac.
020001780000

Herbert & Shelya
McKinley, Trust
OR46-793
212-233
0.57 Ac.
020001760000

Dennis E. & Amy J. Kehl
OR549-704
Tot. 2.108 Ac.
020001580000

Russell & Cheryl Sharp
OR319-717
0.95 Ac.
020001570000

Boyd & Margie
Wright, Trustees
OR285-700
0.62 Ac.

Heath & Tonya Mundy
OR371-459
0.487 Ac.

020