

Hobert & Yvonne
Dingus
OR395-172
31.56 Ac.
020006180100

Deborah J. Hall
OR523-448
6.907 Ac.
020008330100

OR322-798
17.476 Ac.
020008330201

Bull Investments, LTD.
OR547-272
94.644 Ac.
W 1/2 NE Pt.,
E 1/2 NE Pt.,
NE NE Pt.
020008330000

Timothy & Phyllis
Heskett
208-899
36.00 Ac.
SE NE Pt.
020008250100

1/2 NW Pt.

OR504-308
19.992 Ac.
020006380203

OR91-727
5.83 Ac.
020008040000

OR657-950
6.0715 Ac.
020008010000

OR470-309
9.57956 Ac.
020008010000

OR274-723,
OR580-509
4.000 Ac.
020008010600

OR115-699
100.00 Ac.
020008250000

OR209-226
2.00 Ac. (CT)
020008250000

OR111-208,
209-228
2.00 Ac. (CT)
020008250000

Deborah Lytle
Tot. 46.29 Ac.
OR57-80
39.05 Ac. *
NE SE Pt.
020008280000

Rosemarie B. Buth
(nka Rosemarie B. Keidel)
203-864
(T.O.D. OR506-764)
.049 Ac.
020008300000

Connie Ruff
OR136-373
0.90 Ac.
020008290000

OR487-880
OR28-171
(T.O.D. OR488-961)
7.52596 Ac.
020008160201

Max Allbery
OR487-880
OR28-171
(T.O.D. OR488-961)
4.81468 Ac.
020008390000

Misti Allen
OR427-312, OR279-868
(T.O.D. OR488-961)
1.714 Ac.
020008390000

Kim & Linda Stevelt
L/M 5-536,
101-235, .13 Ac.
7.87 Ac.
SE SE Pt.
020008390000

Stephen & Wanda
Boudinot, Trustees
OR456-666
Tot. 53.16 Ac.
020008370000

25.50 Ac.
SE SE Pt.

Stephen & Wanda Boudinot,
Trustees
OR456-666
E 1/2 NE Pt.
12.50 Ac.
020009070000

Donald & Doris
West
218-426
12.01 Ac.
020009070000

Kim & Linda Stevelt
219-114
12.74 Ac.
W 1/2 NW Pt.
020009250000

Dale & Sharon
Brown
OR406-910
2.00 Ac.
NW Pt.
020009300000

Recile Micochero
OR401-743
5.17 Ac.
020009190000

Rosemarie B. Buth
(nka Rosemarie B. Keidel)
203-864
(T.O.D. OR506-764)
70.370 Ac. *
N 1/2 SW Pt.
020008150000

Randy G. & Kay D.
Carpenter
OR518-262
14.3877 Ac.
020008190101

David Diehm
OR120-836,
205-435
5.00 Ac.
020008190100

Ronald & Debra Stephenson
OR276-726
17.24 Ac.
020009180000

Scott Albert Fall
OR587-662
Tot. 80 Ac.
020008180000

40 Ac.
NW SE

Michael Annah
OR421-878,
OR217-805
Tot. 12.863 Ac.
020008210100

5.171 Ac.
020008210100

5.073 Ac.
020008210100

Ronald & Debra Stephenson
OR313-193
Tot. 12.38 Ac.
020008210202

8.38 Ac.
020008210200

4.00 Ac.
020008210201

Hocking Wilderness, Ltd.
OR180-360, .38 Ac. (Calc.)
020008220000

Bruce & Kim Walker
OR72-327
33.35 Ac.
SW SE Pt.
020006440100

8.5 Ac.

Nancy LeClain
OR382-490
Tot. 10.5 Ac.
020006460000

Roger Davis &
Crystal Cole, Trustees
OR582-694
157.00 Ac.
NE Pt.
020008240000

Timothy &
Crystal Cole
199-243
5.00 Ac.
020008240100

Bryan & Kelly
Nutter
OR467-972
14.23 Ac.
NW Pt.
020007860201

36.00 Ac.
NW Pt.
020007860203

Clare Aitken, Trustee
OR487-373
Tot. 70.5826 Ac.

DEERFIELD FARMS SUB.
SECTION 1
Lots 1-22
Plat Cabinet 1-
Pgs. 171 B, 172 A, B

SECTION 2
Lots 23-35
Plat Cabinet 1-
Pgs. 190 B, 191 A

SECTION 3
Lots 36-59
Plat Cabinet 1-
Pgs. 194 A, B

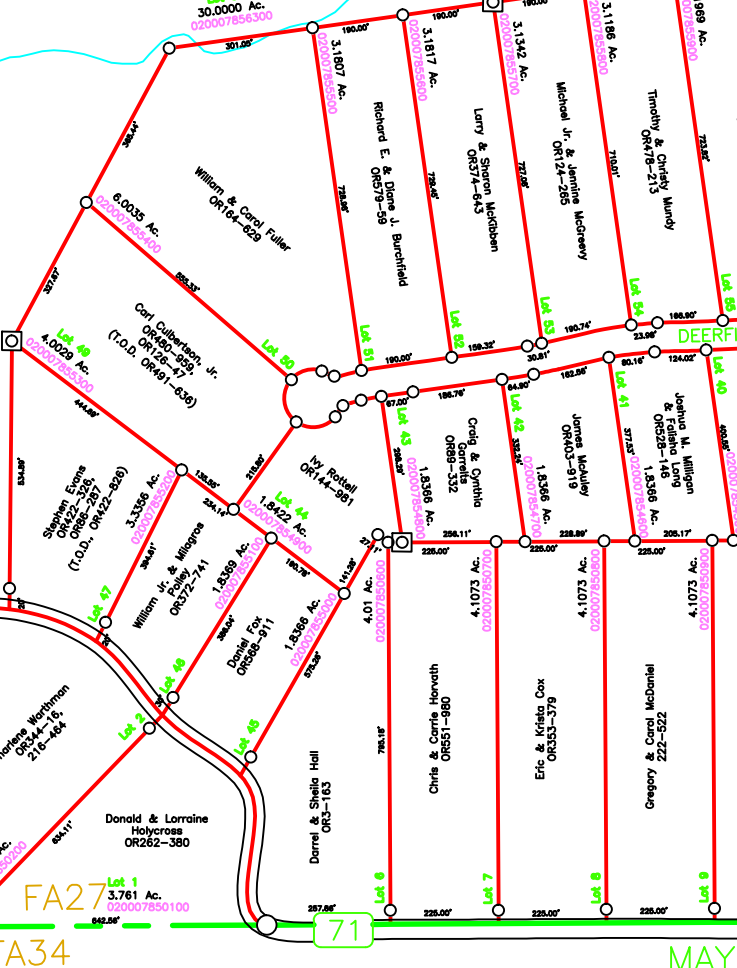
Jeffrey Daubenmire
Tot. 42.25 Ac.

OR333-522
28.88 Ac. (Calc.)
S 1/2 SE Pt.
020008210000

Daniel Loomis
OR268-771,
195-872
4.61 Ac.
020008210400

Thomas Miller
203-182,
195-793
5.59 Ac.
020008210300

OR307-47
13.37 Ac.
020008210500



Paul & Douglas M...
Tot. 13.176 Ac.

Lori Laga
OR405-52
OR155-94
Tot. 2.44 Ac.
020007860200

Steven
OR41
OR29
Tot. 9
020007860200

Daniel Larimer Jr.
OR67-770
2.44 Ac.
020007860200

OR49-831
1.61 Ac.
020007860200

OR98

14.1993 Ac.
020007860200

OR98

OR98

OR98

OR98

OR98

OR98

OR98

OR98

OR98

OR98

OR98