

Trustee
OR408-632
4.161 Ac.
060003730100

NUTTER SUB.

- Lots 1-6

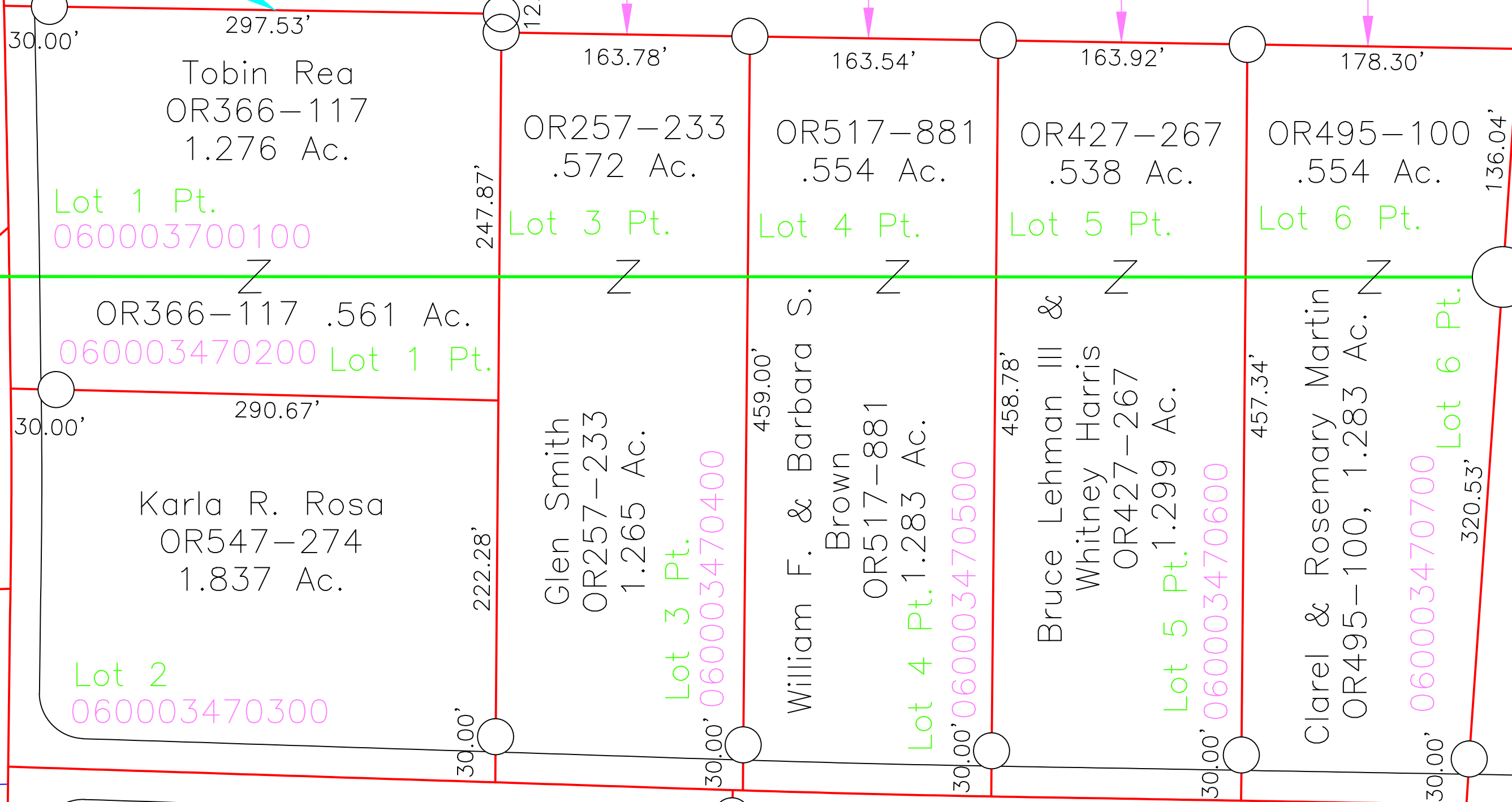
- Plat Cab. 2, Pgs. 73, 74

Christina Nutter
OR324-631
.02 Ac.
060003740000

Christina Nutter
OR324-631
060003440000

.9747 Ac.

1.9767 Ac.
060003460100



Sandra Webster,
Trustee
OR355-430
5.007 Ac.

Jason Geil
OR544-766

cker
549
AC.
Pt.