

Betty & Robert Sparks  
OR484-191 \*  
16.46 Ac.  
SE SE Pt.  
130000430000

OR111-544  
18.50 Ac.  
Frac. 14

OR111-544  
SW SW  
36.00 Ac.  
130000220000

200-771  
33.53 Ac.  
SE SW Pt.  
130000340000

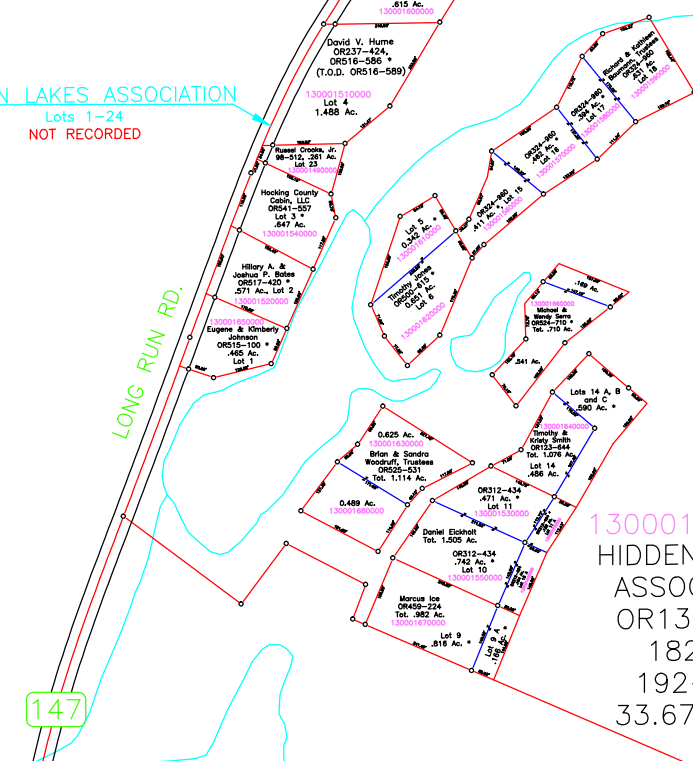
James Moses  
196-127  
Tot. 33.01 Ac.  
130000310000  
25.57 Ac.  
SW SE Pt.

Tot. 36.83 Ac.  
130000330000  
25.50 Ac.  
SE SE Pt.

Richard Smoot  
Tot. 82.87 Ac.  
OR255-793  
30.27 Ac.  
130000120000

Stephenson  
OR97-673  
2.50 Ac.  
130000120100

OR80-103  
9.50 Ac.  
Frac. 6 Pt.  
130000010100



130001500000  
HIDDEN LAKES  
ASSOCIATION  
OR134-396  
182-41  
192-492  
33.67 Ac. \*

Robert & Gayle  
Moses  
OR111-544  
37.00 Ac.  
NW NW  
130001800000

John & Clara Cavinee  
200-771  
31.24 Ac.  
NE NW Pt.  
130001840000

Ronald & Susan Colby  
OR524-108  
47.785 Ac.  
W 1/2 NE Pt.  
130001810000

Danny Demint  
144-203  
40.00 Ac.  
NE NE  
130001900000

Donald & Catherine Hill  
OR148-896  
33.94 Ac.  
Frac. 2 Pt.  
130001910300

Robert Robinson  
OR241-887  
5.00 Ac.  
130001910000

Billie Riddlebarger  
OR477-267  
5.00 Ac.  
130001910200

J. B. Vickie  
Tr  
OR5  
14  
Frac.

John Jr. & Kim Kouger  
OR362-273  
41.77 Ac.  
NE Pt.  
130001480000

Marcia & Robert Sr.  
Jessberger, Trustees  
OR468-817  
Tot. 71.66 Ac.  
130001790000

27.66 Ac.  
SE NW Pt.

Ronald & Marjorie Reed  
(T.O.D. OR490-955)  
OR490-953  
6.868 Ac.  
130001780100

Debra & David  
McDaniel  
OR215-604  
39.94 Ac.  
SE NE Pt.  
130001710000

Donald & Catherine Hill  
OR513-78  
18.552 Ac.  
130002020600

210-273, 5.68 Ac.  
N 1/2 NW Pt., Frac. 1 Pt.  
130002020100

Brian Bowman  
OR26-511  
32.00 Ac.  
Frac. 1 Pt.  
130001970401

Ryan P. Cunningham, Trustee  
OR523-645  
Tot. Sec. 19.684 Ac.  
19.494 Ac.  
NE SE Pt.  
130001470100

OR558-742  
(T.O.D. OR558-755)  
20.00 Ac.  
N 1/2 NW SW  
130001690000

Dewey S. &  
Jackie A. Bias  
Tot. 81.90 Ac.

OR558-742  
(T.O.D. OR558-755)  
33.90 Ac.  
NE SW Pt.  
130001690000

Oscar Morrison  
OR210-56  
40.00 Ac.  
NW SE  
130001720000

H. Rocky Marcum  
OR22-948  
Tot. Sec. 50.73 Ac.

Robert & Karen  
Thompson  
OR94-765  
9.00 Ac.  
NW SW Pt.  
130002060000

Thomas Vance  
OR530-529,  
OR420-390  
Tot. 15.44 Ac. \*  
130002030000

T & D Properties, L  
Tot. 117.04175 Ac

& Ann Metz  
57.18 Ac.

OR170-371  
19.49 Ac.  
NE SE Pt.  
(CT)  
130001470000

OR558-742  
(T.O.D. OR558-755)  
20.00 Ac.  
S 1/2 NW SW  
130001690000

(T.O.D. OR558-753)  
5.00 Ac.  
NW SW Pt.  
130001690100

(T.O.D. OR558-755)  
OR542-826  
3 Ac.  
130001750000

H. Rocky Marcum  
OR73-670  
15.73 Ac.  
SW SE Pt.  
130001860200

35.00 Ac.  
NE SE Pt.  
130001860100

OR174-411  
1.67 Ac.  
130001900000

PB&J Properties, Ltd.  
OR298-1  
Tot. 13.82 Ac.  
130002040000

14.53 Ac.  
Frac. 3 Pt.,  
Frac. 4 Pt.

OR451-600  
39.09375 Ac.  
NE SW Pt.  
130001970400

04-247  
70-354  
51 Ac.  
(CT)  
1450400

Holly Tatman  
OR206-309  
OR546-582  
Tot. 62.00 Ac.  
130001450500

William &  
Judith Simons  
OR11-281  
122-463  
40.00 Ac.  
SW SW  
130001830000

Kendra & Donald Jr.  
Cipollini  
OR471-258  
8.31 Ac.  
SE SW Pt.  
130001730000

Steven & Laura Scurlock  
183-598, 10.20 Ac.  
SE SW Pt.  
130001760000

H. Rocky Marcum  
OR73-670  
15.73 Ac.  
SW SE Pt.  
130001860200

Allen & Flora Coovert  
198-43 \*  
39.67 Ac.  
SE SE Pt.  
130001890000

OR174-411  
1.67 Ac.  
130001900000

Robert & Juanita  
Kane  
Tot. 5.50 Ac.  
130001700000

14.53 Ac.  
Frac. 3 Pt.,  
Frac. 4 Pt.

OR49-80  
27.948 Ac  
SE SW Pt.  
130002090000

Barbara S.  
Trustees  
26  
3 Ac.  
c.  
Pt.  
000

40.00 Ac.  
SE SE

40.00 Ac.  
SW SW

Robert & Virginia Short  
119-570  
20.41 Ac.  
SE SW Pt.  
130001740000

Clifford & Janie Bowe  
OR307-741  
19.52 Ac.  
SW SE Pt.  
130001860300

35.00 Ac.  
NE SE Pt.

OR174-411  
1.67 Ac.  
130001900000

Robert & Juanita  
Kane  
Tot. 5.50 Ac.  
130001700000

14.53 Ac.  
Frac. 3 Pt.,  
Frac. 4 Pt.

OR49-80  
27.948 Ac  
SE SW Pt.  
130002090000

c.  
SE

PE10 PE11  
PE15 PE14

David Otten, et al.  
OR37-543

Sean Fahnestock &

T12N R19W  
T12N R19W

Thomas II & Maureen Dundon

N 1/2 NE Pt.

OR174-411  
1.67 Ac.  
130001900000

Perry & Tammy  
Parsons  
OR410-76  
8.61 Ac.  
130002160201

OR269-816  
20.45 Ac.  
130002160100

OR269-816  
15.55 Ac.  
130002160101