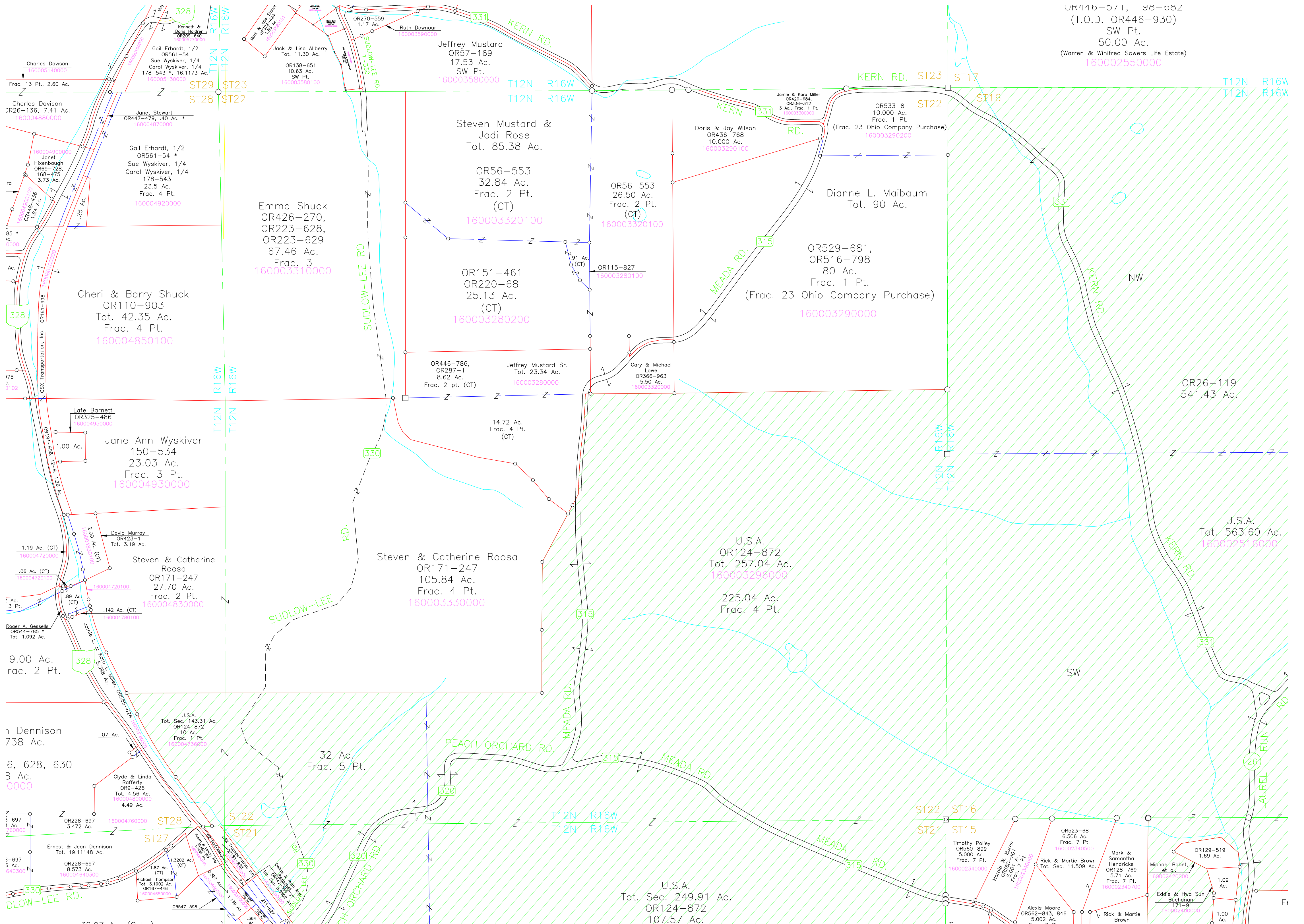


OR446-571, 198-682
(T.O.D. OR446-930)
SW Pt.
50.00 Ac.
(Warren & Winifred Sowers Life Estate)
160002550000



Jeffrey Mustard
OR57-169
17.53 Ac.
SW Pt.
160003580000

Steven Mustard &
Jodi Rose
Tot. 85.38 Ac.
OR56-553
32.84 Ac.
Frac. 2 Pt.
(CT)
160003320100

OR151-461
OR220-68
25.13 Ac.
(CT)
160003280200

OR446-786,
OR287-1
8.62 Ac.
Frac. 2 pt. (CT)
Jeffrey Mustard Sr.
Tot. 23.34 Ac.
160003280000

Steven & Catherine Roosa
OR171-247
105.84 Ac.
Frac. 4 Pt.
160003330000

U.S.A.
OR124-872
Tot. 257.04 Ac.
160003296000
225.04 Ac.
Frac. 4 Pt.

Dianne L. Maibaum
Tot. 90 Ac.
OR529-681,
OR516-798
80 Ac.
Frac. 1 Pt.
(Frac. 23 Ohio Company Purchase)
160003290000

OR533-8
10,000 Ac.
Frac. 1 Pt.
(Frac. 23 Ohio Company Purchase)
160003290200

Doris & Jay Wilson
OR436-768
10,000 Ac.
160003290100

OR56-553
26.50 Ac.
Frac. 2 Pt.
(CT)
160003320100

OR115-827
160003280100

Gary & Michael
Lowe
OR366-963
5.50 Ac.
160003320000

Emma Shuck
OR426-270,
OR223-628,
OR223-629
67.46 Ac.
Frac. 3
160003310000

Cheri & Barry Shuck
OR110-903
Tot. 42.35 Ac.
Frac. 4 Pt.
160004850100

Jane Ann Wyskiver
150-534
23.03 Ac.
Frac. 3 Pt.
160004930000

Steven & Catherine
Roosa
OR171-247
27.70 Ac.
Frac. 2 Pt.
160004830000

U.S.A.
Tot. Sec. 143.31 Ac.
OR124-872
10 Ac.
Frac. 1 Pt.
160003360000

32 Ac.
Frac. 5 Pt.

Clyde & Linda
Rafferty
OR9-426
Tot. 4.56 Ac.
160004800000
4.49 Ac.

Ernest & Jean Dennison
Tot. 19.11148 Ac.
OR228-697
8.573 Ac.
160004640300

Michael Thompson
Tot. 3.1902 Ac.
OR167-446
160004850000

U.S.A.
Tot. Sec. 249.91 Ac.
OR124-872
107.57 Ac.

Timothy Polley
OR560-899
5,000 Ac.
Frac. 7 Pt.
160002340000

Rick & Martie Brown
Tot. Sec. 11.509 Ac.
OR523-68
6,506 Ac.
Frac. 7 Pt.
160002340500

Mark & Samantha
Hendricks
OR128-769
5.71 Ac.
Frac. 7 Pt.
160002340700

Michael Babet
et al.
OR129-519
1.69 Ac.
1.09 Ac.
160002400000

Alexis Moore
OR562-843, 846
5,002 Ac.
171-9

Rick & Martie
Brown

Eddie & Hwa Sun
Buchanan
160002400000

Er